
O.E.M. TOP LINK Assemblies

CAT. 1

159-10202

*Fits 4000 thru 7000 1971 & up
Replaces D0NN576B*

FORGED WITH FOLD AWAY
ADJUSTMENT HANDLE 16-3/4" BODY

3/4" PIN HOLES, 1/4" DIA. THREAD
ADJUST FROM 24-1/2" TO 34-1/2"

CAT. 1 & 2

159-10200

*Fits 4000 thru 7000 1971 & up
Replaces E6NN576C*

FORGED WITH FOLD AWAY
ADJUSTMENT HANDLE 16-3/4" BODY

3/4" & 1" PIN HOLES, 1/4" DIA. THREAD
ADJUST FROM 24-1/2" TO 34-1/2"

CAT. 2

159-10201

*Fits 4000 thru 7000 1971 & up
Replaces D0NN576A*

FORGED WITH FOLD AWAY
ADJUSTMENT HANDLE 16-3/4" BODY

1" PIN HOLES, 1/4" DIA. THREAD
ADJUST FROM 24-3/4" TO 34-3/4"

Model Type:

FORD



O.E.M. TOP LINK Assemblies cont'd

CAT. 1 & 2

159-25101

For models: 1030, 1040, 1130,
1140, 1630, 1640, 2030, 2040,
2130, 2140 & 3030

FORGED TOPLINK WITH LATCH,
PAINTED GREEN

12-1/2" CENTER TUBE, 3/4" & 1" PIN
HOLES, 1-1/8" DIA. THREAD ADJUSTS
FROM 21-5/8" TO 30".

CAT. 2

159-25102

FORGED TOPLINK WITH LATCH,
PAINTED GREEN

12-1/2" CENTER TUBE, 1" PIN HOLES,
1-1/8" DIA. THREAD ADJUSTS FROM
21-5/8" TO 30".

CAT. 1

All Forged Toplinks w/ latch.

159-15200

Replaces: 677198 / Center Tube: 21-1/2"

159-15201

Replaces: 1870075m1 / Center Tube: 17-1/4"

159-15202

Replaces: 677197 / Center Tube: 18-3/4"

CAT. 1 & 2

*All Forged Toplinks w/ latch.
LH implement end Cat.1 / RH tractor end Cat. 2*

159-15203

Replaces: 894376M1 / Center Tube: 18-3/4"

159-15205

Replaces: 894377M1 / Center Tube: 21-1/2"

CAT. 2

All Forged Toplinks w/ latch.

159-15204

Replaces: 893478M1 / Center Tube: 18-3/4"

159-15206

Replaces: 19876A91 / Center Tube: 21-1/2"

Model Type:

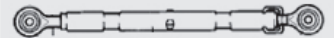
JOHN DEERE



PART NO.
159-10202

Model Type:

MASSEY FERGUSON



PART NO.
159-10202

ADJUSTABLE TOP LINKS



Category 0

159-96 • TL-199

Forged 7-1/2" body Pin Holes: 5/8" Dia. Thread: 3/4" Adjust from: 11" 16"

159-97

Forged 9-3/4" body Pin Holes: 5/8" Dia. Thread: 3/4"

Category 1

159-118

Forged 9" body Pin Holes: 3/4" Dia. Thread: 1-1/8"

159-119

Forged 11" body Pin Holes: 3/4" Dia. Thread: 1-1/8"

159-115

Forged 12.5" body Pin Holes: 3/4" Dia. Thread: 1-1/8" Adjust from 17" to 26-1/2"

159-116 (Plated)

Forged 16" body Pin Holes: 3/4" Dia. Thread: 1-1/8" Adjust from 20-1/2" to 29"

159-120 (Red) • 159-121 (Blue)

Forged 16" body Pin Holes: 3/4" Dia. Thread: 1-1/8" Adjust from 20-1/2" to 29"

159-117 • TL-166

Forged 20" body Pin Holes: 3/4" Dia. Thread: 1-1/8" Adjust from 24-1/2" to 33"

Category 2

159-201 • TL-174

Forged 16" body Pin Holes: 1" Dia. Thread: 1-1/8" Adjust from 21" to 33"

159-202 • TL-337

Forged 20" body Pin Holes: 1" Dia. Thread: 1-1/8" Adjust from 25" to 37"

159-203

Forged 24" body Pin Holes: 1" Dia. Thread: 1-1/8" Adjust from 29" to 41"

Forged Top Link Repair Ends



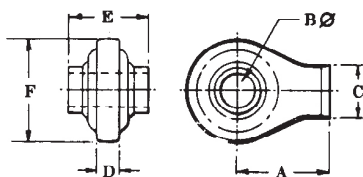
159-1161 (RH) Forged
1-1/8" NC Threads , 3/4" Pin holes

159-1160 (LH) Forged
1-1/8" NC Threads , 3/4" Pin holes



Top Link Thread Lock

159-1556 (RH) Forged
Top Link Lock 1-1/8" NC right hand threads
fits all top links with 1-1/8" NC threads.



Top Link Weld-On Ends

| PART NO. | CAT | A | B | C | D | E | F |
|----------------|-----|-------|-----|-------|-----|-------|-------|
| 159-101 | 1 | 2 | 3/4 | 1-1/8 | 1/2 | 1-3/4 | 2-1/4 |
| 159-102 | 2 | 2-3/8 | 1 | 1-1/8 | 1/2 | 2 | 2-5/8 |

DRAWBARS

One piece 3-point hitch cross drawbars to fit Category 1 through 2 tractors.



Cat.1

159-411 (Red) 159-412 (Blue)- Standard 11 hole

Fits all tractors with 20" lift arm spacing & 7/8" ball sockets. Made of 1"x 2 -1/2" high carbon steel; 26" long; 7/8" end pins; 3/4" hitch pin holes. *Painted red (159-411) or blue (159-412).* Wght: 17lbs.

159-419- Heat Treated 7 hole (Black)

Fits all tractors with 20" lift arm spacing and 7/8" ball sockets. Made of 1"x 2-1/2" heat treated high carbon steel; 20" long; 7/8" end pins; 3/4" hitch pin holes. Wght: 14lbs. (Fits Kubota, Satoh, Yammarr, Mitsubishi, and imported models for Ford, MF, Deere and IH.

Cat.2


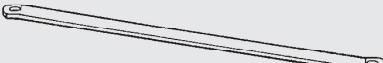

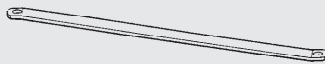

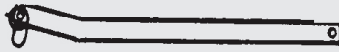

159-421- Heat Treated 11 hole (Blue)

Fits all tractors with 26" lift arm spacing & 1-1/8" ball sockets. Made of 1-1/4" x 3" heat treated high carbon steel; 26" long; 1-1/8" end pins; 3/4" hitch pin holes. Wght: 27lbs.

159-422- Heat Treated 13 hole (Green)

Fits all tractors with 32" lift arm spacing & 1-1/8" ball sockets. Made of 1-1/4" x 3" heat treated high carbon steel; 32" long; 1-1/8" end pins; 3/4" hitch pin holes. Wght: 33lbs.

STABILIZER ARMS

| | | | |
|----------------|---|--|---------|
| 159-621 (Red) | Universal stabilizer arm-right or left Fits 159-611 kit. Made of 3/8" x 2" heat treated high Carbon steel; 7/8" pin holes on 31-9/16" centers. Painted red or blue. Weight:6 lbs. |  | SA-621 |
| 159-623 (Blue) | | | |
| 159-622 | Stabilizer arm-right or left Made of 3/8" x 2" heat treated high carbon steel; 7/8" Pin holes on 33-1/8" centers. Painted red. Weight:7 lbs. |  | SA-622 |
| 159-626 | Stabilizer arm-right or left Fits Massey Ferguson 65 with short lift arms. Made of 3/8" x 2" heat treated high carbon steel; 7/8" pin holes on 30"centers. Painted red. Weight:7 lbs. |  | SA-626 |
| 159-627 | Stabilizer arm-right or left Fits Massey-Ferguson 65, 165, 175, & 180 standard clearance. Made of 3/8" x 2"heat treated high carbon steel; 7/8" pin holes on 34" centers. Painted red. Weight:7 1/2 lbs. |  | SA-627 |
| 159-6251 | Stabilizer arm-left hand Fits ford 2000, 3000 Made of 3/8" x 2" heat treated high carbon steel 7/8" pin holes on 31-5/8" centers. Painted red. Weight:6 lbs |  | SA-6251 |
| 159-6252 | Stabilizer arm-right hand Fits ford 2000, 3000 Made of 3/8" x 2"heat treated high carbon steel 7/8" pin holes on 31-5/8" centers. Painted red. Weight:6 lbs. |  | SA-6252 |
| 159-628 | Category 1 Heavy Duty Adjustable (Rh Or Lh) | | |
| | One piece forged ends-no welds to break adjust from 27-1/2" to 35", 7/8" Pin holes, 7/8" threads |  | |

Compact Tractor Stabilizer Assemblies & Links

For most compact tractors 15 hp to 40 hp



159-350
Check Chain Stabilizer Assembly Round
Length: 13" / Nut & Lock Washer included



159-425
Check Chain Stabilizer Assembly Square
Length: 24" / Nut & Lock Washer included

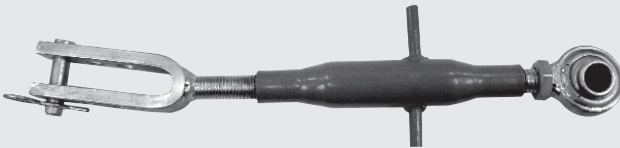


159-630
Check Chain Stabilizer Assembly
Min 14-19/32" 371mm - Max 17- 1/2" 444mm.

Adjustable Side Links



159-90 ... Cat 0 7-1/2" Center Tube



159-750 Cat 1 ... 7-1/2" Center Tube

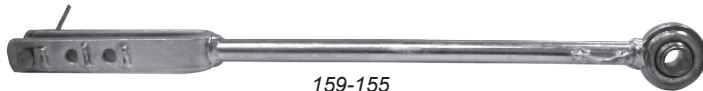
159-950 Cat 1 ... 9-1/2" Center Tube

159-0115 Cat 1 ... 11-1/2" Center Tube

L. H. SIDE LINKS - CAT I (Non-Adjustable)



159-1150



159-155

159-1150 Left Hand Side Link 11.5".

159-155 Left Hand Side Link 15.5"

STABILIZER KITS



159-611• SK-611

Stabilizer kit for Category 1 implements with 7/8" draw pins

Replaces ferguson 677022. Fits Ferguson all models; Ford 9n , 2n , 8n , NAA, 600, 800; Massey Ferguson 35 & 50. Has heat treated 3/8" x 1-3/4" high carbon steel arms. Contains; 2-159-621 arms, 2-159-631 brackets, 2-150-6 pins, 2-154-1533 lynch pins. Painted red.
Weight: 18 lbs.

STABILIZER STRAPS



159-511• DS-511

Upper stay strap, replaces: Ford-9N5374B & MF-181985M1. Fits Ferguson, all models; Ford 2N, 9N, 8N, NAA, 600, 700, 800, 900; Oliver 550 and all Oliver 3-point conversion; Massey Ferguson 35 & 50. Made of 1/4" x 1-1/2" heat treated high carbon steel. Painted red.
Weight: 2 1/2 lbs.



159-512• DS-512

Lower stay strap, replaces: Ford-9N5375B & MF-181986M1. Fits Ferguson all models; Ford 2N, 9N, 8N, NAA, 600, 700, 800, 900; Oliver 550 and all Oliver 3-point conversion; Massey Ferguson 35 & 50. Made of 1/4" x 1-1/2" heat treated high carbon steel. Painted red.
Weight: 2 lbs.

ADJUSTABLE CLEVIS PIN

For Side Links



Part# 650-604

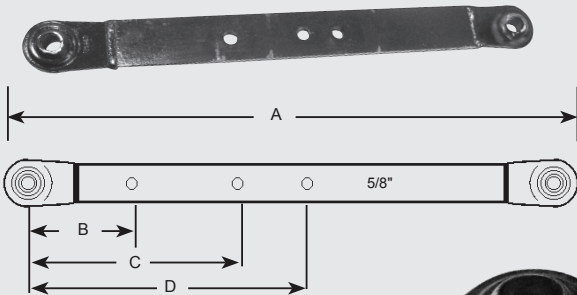
LIFT ARMS



159-331 • LA-335

Category 1 Right Or Left Hand Lift Arm

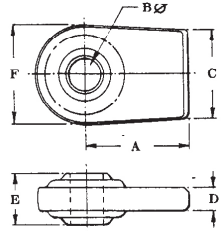
Fits Ferguson all models; Ford 2N, 9N, 8N, NAA; Massey Ferguson 35 & 50; Oliver 550 and all Oliver 3-point conversion: John Deere 1010. 1/2" X 2-1/2" alloy steel; 7/8" pin holes on both ends; 31-3/4" ball centers; 34-1/4" overall length. Painted red. **Weight: 11 lbs.**



Lift Arms for Compact Tractors

All are Category 1, 2-1/2" wide and 5/8" thick

| Part # | A | B | C | D |
|---------|-----|--------|---------|---------|
| 159-322 | 22" | 6-1/4" | No Hole | No Hole |
| 159-324 | 24" | 7-1/4" | 9-1/4" | No Hole |
| 159-326 | 26" | 8-1/2" | 12" | 13-3/4" |
| 159-328 | 28" | 8-1/2" | 13" | 14-3/4" |
| 159-330 | 30" | 6" | 13" | 16" |
| 159-332 | 32" | 6" | 11-3/4" | 15-1/2" |



Lift Arm Weld on Ends

CAT.1
CAT.2
CAT.3
CAT.3 HD

| PART NO. | A | B | C | D | E | F |
|----------|----------|---------|----------|------|--------|----------|
| 159-1338 | 2-3/4" | 7/8" | 2-3/8" | 5/8" | 1-3/8" | 2-5/8" |
| 159-1342 | 3-1/8" | 1-1/8" | 2-3/4" | 3/4" | 1-3/4" | 3-1/8" |
| 159-1344 | 3-3/8" | 1-7/16" | 3" | 3/4" | 1-3/4" | 3-1/2" |
| 159-1350 | 3-17/32" | 1-7/16" | 3-15/16" | 7/8" | 1-3/4" | 3-15/16" |



PART NO.

159-152 SL-152

Lift Arm Leveling Assembly

Replaces; Ford NCA577A. Permits wide range of tilt adjustments on implements. 7/8" NF threads; 19 1/4" overall closed length. Painted red. 5/8" Pin holes. **Weight: 8 lbs.**



Check Chain Clevis

PART NO. 159-1642

Used to fasten check chain to tractor.
Replaces: FORD - APN582A
Massey Ferguson - 180333M1



Check Chain Clevis W/ Chain

PART NO. 159-1644

Replaces: Ford - CBPN598A
Massey Ferguson

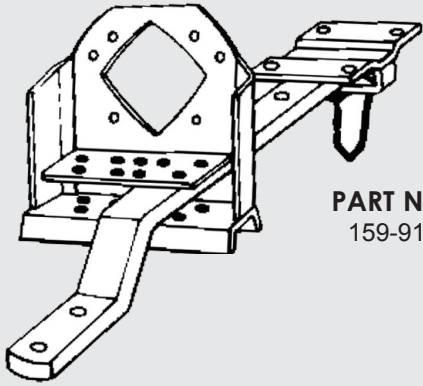


Check Chain Clevis Eye Bolt

PART NO. 159-1641

Used to fasten check chain to lift arms.
Replaces Ford - NCB660A
Assembled with 9/16" NF Nut

Swinging Drawbar Kits & Parts



PART NO.
159-911

Swinging Drawbar Kits

Fits Ford 8N, 2N, 9N, NAA, 630, 631, 640, 641, 650, 651, 660, 661; Ferguson T020, T030; Massey Ferguson 35 & 50.

Kit contains:

- (1) 159-921 Drawbar
- (1) 159-931 Hinge Clevis
- (1) 159-932 Drawbar Hanger

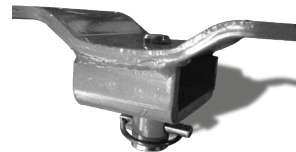
Painted Red with a weight of 33lbs.



PART NO.
159-921

Swinging Drawbar

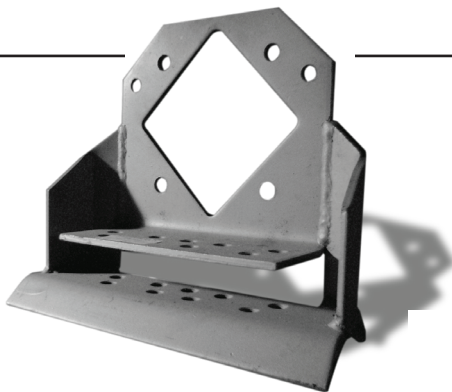
Fits all tractor models listed under 159-911. Made of 1" x 2" heat treated high carbon steel, 30" Overall length. Painted red **Weight 15 lbs.** (Ford CONN805F)



PART NO.
159-931

Swinging Drawbar Clevis Assembly

Fits all tractor models listed under 159-11. Complete with dichromate plated pins. Painted red. Ford NCA803B. **Weight 7 lb.**



PART NO.
159-932

Drawbar Hanger

Fits all tractor models listed under 159-911. Used with 159-921 drawbar. All welded construction. Ford NCA809A. **Weight 11 lb.**



PART NO.
150-742

Swinging Drawbar Clevis Pin

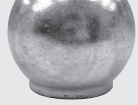


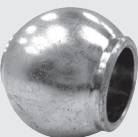
Fits 159-911 & 159-931 assemblies. 7/8" Dia, cold rolled steel, 3 1/2" overall length. Dichromate plated. **Weight 1/2 lb.**

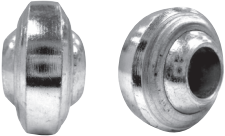

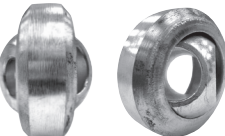

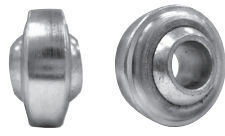
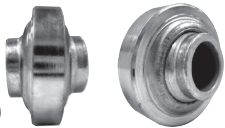
TOP LINK BALLS & SOCKETS

TOPLINK WELD ON BALL SOCKETS

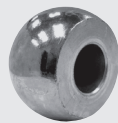
| | | |
|--|---|---|
| <p>159-213</p> <p>159-212</p> <p>CAT. 1</p> | <p>Standard Duty Category 1-1 7/8" O.D. Sleeve Fits all category 1 top links. 1-7/8" O.D.Sleeve, 3/4" sleeve Width, 3/4" pin hole, 1-5/8" thru bore. Non plated. Weight 60 lbs./C</p> <p>Heavy Duty Category 1-2 1/8" O.D. Sleeve Fits all category 1 top links. 2-1/8" O.D. Sleeve, 7/8" sleeve Width, 3/4 " pin hole, 1-5/8 " thru bore. Plated. Weight 70 lbs./C</p> |  <p>B213</p>  <p>B212</p> |
| <p>159-236</p> <p>CAT. 1 & 2</p> | <p>Standard Duty Category 1 & 2 speeBALL Fits all category 1 or 2 top links. 2-3/8 " O.D. Sleeve, 7/8" Sleeve width, 3/4" and 1" pin holes, 1-1/2" thru 3/4" Bore, 1-1/4" thru 1" bore. Plated. Weight 75 lbs/C</p> |  <p>B236</p> |
| <p>159-214</p> <p>CAT. 2</p> | <p>Standard Duty Category 2-2 3/8" O.D.Sleeve Fits all category 2 top links. 2-3/8" O.D. Sleeve width, 1 " Pin hole, 1-3/4" thru bore. Plated. Weight 90 lbs./C</p> |  <p>B214</p> |
| <p>159-2229</p> <p>CAT. 3</p> | <p>Heavy Duty Category 3 Fits all category 3 top links 3 1/8" O.D. Sleeve; 1-1/4" sleeve Width; 1-1/4: pin hole; 1-3/4" thru bore. Non plated. Weight 188 lbs./C</p> |  <p>B2229</p> |

SPECIAL TOP LINK BALLS

| | | |
|-----------------------|--|--|
| <p>159-241</p> | <p>John Deere & Oliver top link implement ball Category 1 Replaces: John Deere F2680; Oliver 105968A Description: 3/4" pin hole, 1-3/4" thru bore, 2" diameter Dichromate plated. Weight 95 lbs./C</p> |   <p>B241 3054</p> |
| <p>159-242</p> | <p>John Deere & Oliver top link implement ball Category 2 Replaces; John Deere F2681; Oliver 104585A Description: 1" pin hole, 1-3/4" thru bore, 2 " diameter Dichromate plated. Weight 80 lbs./C</p> |   <p>B242 3055</p> |

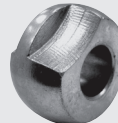
| | | |
|-----------------------|---|--|
| 159-221 | <p>Standard duty category 1-for tractors 30 H.P. or less, 2 3/8" O.D. Sleeve Fits all category 1 lift arms. 2 3/8" O.D. Sleeve, 7/8" sleeve width, 7/8" Pin hole, 1 3/8" thru bore. Non plated. Weight 90lbs./C</p> |  B221 |
| CAT. 1 | | |
| 159-232 | <p>Heavy duty cat.1 & 2 Speeball-for tractors of 50 H.P. or less Fits all category 1 or 2 lift arms. 2 3/4" O.D. Sleeve, 1 3/16" sleeve width, 7/8" & 1 1/8" Pin holes, 1 3/4" thru bore. Plated. Weight 150 lbs./C</p> |  B232 |
| 159-234 | <p>Extra heavy Cat.1 & 2 Speeball-for tractors of 50 H.P. Or more Fits all category 1 or 2 lift arms. 3 1/8" O.D. Sleeve, 1 3/8" sleeve width, And 7/8" & 1 1/8" pin holes, 1 3/4" thru bore. Plated. Weight 205 lbs./C</p> |  B234 |
| CAT. 1 & 2 | | |
| 159-222 | <p>Standard Duty Category 2- for tractors 30 H.P. or less, 2 3/8" O.D. sleeve Fits all category 2 lift arms, 2 3/8" o.D. Sleeve, 7/8" sleeve width, 1 1/8" Pin hole, 1 5/16" thru bore. Non plated. Weight 75 lbs./C</p> |  B222 |
| 159-2216 | <p>Extra heavy duty category 2-3 1/8" O.D. Sleeve Fits all category 2 lift arms. 3 1/8" O.D.Sleeve, 1 3/8" sleeve width, 1 1/8" Pin hole, 1 3/4" thru bore. Plated. Weight 200 lbs./C</p> |  B2216 |
| 159-2217 | <p>Extra heavy duty category 2-2 3/4" O.D. Sleeve Fits all category 2 lift arms. 2 3/4" O.D. Sleeve, 1 1/4" sleeve width, 1" Pin hole, 1 3/4" thru bore. Plated. Weight 200 lbs./C</p> |  B2220 |
| CAT. 2 | | |

SPECIAL LIFT ARM BALL SOCKETS



159-243

Ford lift arm replacement ball-Category 1
Fits ford 3000, 4000, & 5000. Has 7/8" pin hole, 1 3/8" thru bore, 2 1/4" Diameter. Dichromate plated. **Weight 110 lbs./C** (Ford DDN 995233)



159-249

Massey Ferguson lift arm replacement ball-Category 1
Replaces: MF - 886428m1. Fits MF35, MF240, MF250; ind 20D & 20E. Has 7/8" pin hole. **Weight 101 lbs./C**



159-244

Ford lift arm replacement ball-Category 2
Fits ford 3000, 4000, & 5000. Has 1 1/8" pin hole, 1 3/4" thru bore, 2 1/4" Diameter. Dichromate plated. **Weight 105 lbs./C** (Ford c5nn557a)



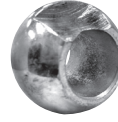
159-247

Ford lift arm replacement ball Category 2 (narrow)
Replaces: ford c5nn557b. Fits 3000, 4000, & 5000. Has 1 1/8" pin hole, 1 3/8" Thru bore, 2 1/4 diameter. **Weight 70 lbs./C**



159-246

Oliver lift arm replacement ball-Category 2
Replaces; oliver 104519a. Fits all models with claw type lift arms. Has 1 1/8" pin hole, 1 3/4 " thru bore, 2 " diameter. Dichromate plated. **Weight 70 lbs./C**



159-250

Massey Ferguson lift arm replacement ball-Category 2
Replaces: MF - 886429M1. Fits MF135 & MF282. Has 1-1/8" pin hole. **Weight 101 lbs./C**



159-245
Retainer Spring For 159-244.



154-300
Retainer clip for 159-249 & 159-250. Replaces: MF - 1860936M1.

BUSHINGS

Top Link & Lift Arm Reducing



ALL bushing are plated

Top Link Reducing Bushings

| Part No. | Category | Overall Length | Interchange No. |
|----------|----------|--------------------------------|-----------------|
| 159-829 | 1 to 0 | 5/8" I.D. X 3/4" O.D. X 1-5/8" | B829 |
| 159-831 | 2 to 1 | 3/4" I.D. X 1" O.D. X 2" | B831 |
| 159-833 | 3 to 2 | 1" I.D. X 1-1/4" O.D. X 2" | B833 |

Lift Arm Reducing Bushings

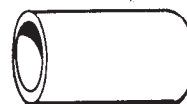
| Part No. | Category | Overall Length | Interchange No. |
|-----------|---------------|-------------------------------------|-----------------|
| 159-828 | 1 to 0 | 5/8" I.D. X 7/8" O.D. X 1-3/8" | B828 |
| 159-821 | 2 to 1 | 7/8" I.D. X 1-1/8" O.D. X 1-3/4" | B821 |
| 159-832 | 3 to 2 | 1-1/8" I.D. X 1-7/16" O.D. X 1-3/4" | B833 |
| 159-2164 | 3 to 2 Long | 1-1/8" I.D. X 1-7/16" O.D. X 2-3/4" | 2164, B8319 |
| 159-824 | 3 to 2 X-Long | 1-1/8" I.D. X 1-7/16" O.D. X 3-1/4" | 2166, B8320 |
| 159-95900 | 3 to 2 X-Long | 1-1/8" I.D. X 1-7/16" O.D. X 4-1/4" | |
| 159-1846 | 3 to 2 w/Hole | 1-1/8" I.D. X 1-7/16" O.D. X 2-1/2" | 3010, B8312 |



159-829



159-831



159-833



159-821



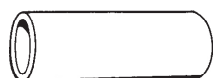
159-832



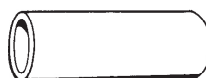
159-2164



159-828



159-824










159-95900



159-1846

Top Link Pins

| | | | | | |
|---------------|-------------------------------|---|--|---|-----------------------------|
| CAT. 0 | 150-776 |  | 5/8" DIA. X 2-3/4" USABLE REPLACES: CASE / IH - B500183 | INTERCHANGE NO. P776 | |
| | CAT. 1 | 150-4 \$1.79 |  | 3/4" DIA. X 2-3/4" USABLE REPLACES: FORD - 957E560, MF - 19546M1, CASE / IH - B500184 | 946 P771 |
| | | 150-12 \$1.91 |  | 3/4" DIA. X 3-7/8" USABLE REPLACES: MF - 195589MI, AC - 339942, CASE / IH - B500185 | 1002 P772 |
| | | 150-1464 \$2.21 |  | 3/4" DIA. X 4-3/4" USABLE REPLACES: FORD - E381T9, CASE / IH - B500186 | 1464 P7715 |
| CAT. 2 | 150-1674 |  | 1" DIA. X 4 9/16 USABLE REPLACES: FORD - C5NN486A | 185-8730 P774 | |
| | 150-1892 |  | 1" DIA. X 5-3/8" USABLE REPLACES: FORD - E2016F9, AC - 345552 | 1892 P7720 | |
| CAT. 3 | 150-7711 \$11.39 |  | 1-1/4" DIA. X 4 -11/16" USABLE REPLACES: MF - 3670731X1, IH - 392211TI, CASE - A76285, AC240251, CASE / IH - B500189 | P7711 | |

HEAVY DUTY DRAW PINS



| PART NO. | TYPE | DESCRIPTION | MFG# |
|----------|--------|-----------------------------|--------|
| 150-3032 | CAT. 2 | 1-1/8" DIA. X 4-3/4" USABLE | 3032.. |
| 150-3132 | CAT. 2 | 1-1/8" DIA. X 7-1/2" USABLE | 3132.. |
| 150-7239 | CAT. 2 | 1-1/8" DIA. X 9" USEABLE | 3132.. |



| PART NO. | TYPE | DESCRIPTION | MFG# |
|----------|--------|------------------------------|-------|
| 150-7230 | CAT. 3 | 1-7/16" DIA. X 4-1/2" USABLE | P7230 |
| 150-7231 | CAT. 3 | 1-7/16" DIA. X 6-1/2" USABLE | P7231 |

INTERNATIONAL TOPLINK PINS

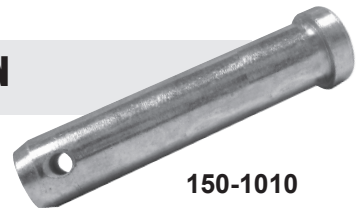


150-110 • CAT 2
1" X 4" (1-5/16" SHOULDER);
REPLACES: 528084R1, 3074756R1,
B500182



150-111 • CAT 1
3/4" X 3" (1-3/4" SHOULDER);
REPLACES: 528081R1, B500181

BALL SOCKET PIN



John Deere/ CAT 2
1" X 3-3/4" REPLACES F268-3R-81302
(FOR USE WITH 159-242 BALL SOCKETS)

150-1010


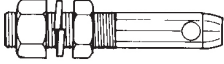
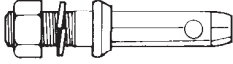
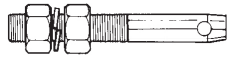
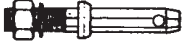

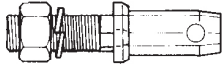
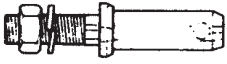
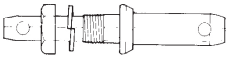
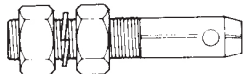
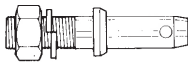
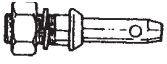
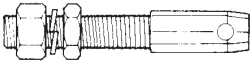
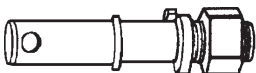








110-1171

LIFT PIN FOR PLANTER

MAXI-MERGE LIFT PIN CAT II-III 7000-7100
REPLACES OEM# A17383

IMPLEMENT PINS

| PIN DIA. | THREAD DIA. | USABLE LENGTH | OVERALL LENGTH | INTERCHANGE NO. |
|-----------------------------|---|---|----------------|-----------------|
| 150-7220 |  | CATEGORY 0 ADJUSTABLE 5/8" 5/8" 1-5/16" | 3-7/8" | P7220 |
| REPLACES CASE / IH: B500195 | | | | |
| 150-5 |  | CATEGORY 1 ADJUSTABLE 7/8" 7/8" 1-5/8" | 5-5/16" | P722 |
| REPLACES CASE / IH: B500196 | | | | |
| 150-10 |  | CATEGORY 1 FORGED 7/8" 7/8" 1-3/4" | 5 1/2" | P728 |
| REPLACES CASE / IH: B500197 | | | | |
| 150-1341 |  | CATEGORY 1 LONG ADJUSTABLE 7/8" 7/8" 2-1/4" | 6-1/4" | 3000 |
| REPLACES CASE / IH: B500198 | | | | |
| 150-1677 |  | CATEGORY 1 FORGED LONG 7/8" 7/8" 2-1/4" | 6-1/2" | P7245 |
| REPLACES CASE / IH: B500199 | | | | |
| 150-724 |  | CATEGORY 1 TO 2 ADJUSTABLE 1-1/8" 7/8" 1-3/4" | 5-3/16" | P724 1132A |
| 150-7 |  | CATEGORY 1 TO 2 FORGED 1-1/8" 7/8" 1-3/4" | 5-1/4" | P7240 1432A |
| 150-1678 |  | CATEGORY 1 TO 2 FORGED LONG 1-1/8" 7/8" 2-1/4" | 6-5/16" | P7246 |
| 150-1887 |  | CATEGORY 1 & 2 FORGED 7/8" & 1-1/8" 1" 1-3/4" | 7-1/2" | P7249 |
| 150-721 |  | CATEGORY 2 ADJUSTABLE 1-1/8" 1-1/8" 1-3/4" | 6-1/4" | P721 |
| 150-720 |  | CATEGORY 2 FORGED 1-1/8" 1-1/8" 1-3/4" | 6-1/4" | P7212 |
| 150-730 |  | CATEGORY 2 TO 1 FORGED 7/8" 1-1/8" 1-3/4" | 5-3/4" | 3022 3032A |
| 150-7211 |  | CATEGORY 2 TO 3 ADJUSTABLE 1-7/16" 1-1/8" 2" 6-1/2" | | P7211 |
| 150-13 |  | REPLACES KUBOTA NO. 32240-37695 3/4" 16MM-1.5 1-5/8" | 4-5/16" | |
| 150-11 |  | REPLACES KUBOTA NO. 67950-77420 3/4" 12MM-1.25 1-11/16" | 3-9/16" | |

| | | PIN DIA. | THREAD DIA. | USABLE LENGTH | OVERALL LENGTH | INTERCHANGE NO. |
|----------------|---|-----------------|--------------------|----------------------|-----------------------|--|
| 150-6 |  | 7/8" | 5/8" | 3/8" | 2-5/8" | FOR STD. STABILIZER ARMS FORD 230044, MF181777M1 P781 1006 3169 |
| 150-163 |  | 7/8" | 5/8" | 1/2" | 2-3/4" | FOR FORGED STABILIZER ARMS 168 1006-3 |
| 150-14 |  | 7/8" | 5/8" | 1 1/4" | 3-1/8" | MOWER ANCHOR PIN FORD 141185, MF668154M1 107 P785 3125 |
| 150-165 |  | 7/8" | | 7/8" | 5/8" | STABILIZER BRACKET PIN FOR FORD & MF 3-1/8" |
| 150-167 |  | 3/4" | 7/8" | 5/8" | 3" | LINK STAY ANCHOR ASSEMBLY MF65 |



Square Handle

PTO LOCK PINS

| Part# | Pin Dia. | Usable |
|---------------|-----------------|---------------|
| 156-516 | 5/16" | 2-1/4" |



Round Handle

| Part# | Pin Dia. | Usable |
|---------------|-----------------|---------------|
| 156-517 | 5/16" | 1/4" |
| 156-518 | 5/16" | 5/16" |
| 156-519 | 5/16" | 3/8" |