

# PREMIUM GALVANIZED BOX SCRAPERS



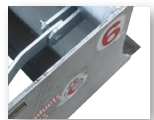
ITEM NUMBERS  
002-8760  
002-8770  
002-8780

3/4"  
SIDE PLATE  
THICKNESS



ITEM NUMBERS  
002-4502  
002-4998

1/2"  
SIDE PLATE  
THICKNESS



## INDUSTRIAL BOX SCRAPER

Industrial Box scraper shown w/ optional ratchet lift



Industrial Box shown w/ optional hydraulic lift



Includes 3" x 8" hydraulic cylinder with hoses.

Available 6', 7' & 8'

- Cat. 2 Scraper has 3/4" side plates
- Hinged rear back flap w/cutting edges
- Bracing from pull pins to mold board
- Hot-dipped galvanized box & frame
- Tempered scarifier shanks
- Recommend up to 100hp 2 wd & 80hp 4wd
- Quick Hitch
- Weights:  
6' - 1103 lbs.  
7' - 1211 lbs.  
8' - 1324 lbs.

Available options:

- Ratchet lift option- 6' & 7'
- Hydraulic lift option- 6', 7' & 8'
- 1/2" A Frames
- Break away shank system on 8' manual only

SPECIAL ORDER ONLY

## CONTRACTOR BOX SCRAPER

Contractor Box scraper shown w/ optional hydraulic lift



Contractor Box scraper shown w/ optional ratchet lift



Available in 6' & 7'

- Cat. 1 Scraper has 1/2" side plates
- Hinged rear back flap w/ cutting edge
- Hot-dipped galvanized box & frame
- Double pull-pin hookup
- Tempered scarifier shanks
- Recommend up to 75hp 2 wd & 55hp 4wd
- Quick Hitch
- Weights:  
6' - 903 lbs.  
7' - 1011 lbs

Available options:

- Ratchet lift option
- Hydraulic lift option
- 1/2" A Frames

SPECIAL ORDER ONLY