

PATH SLAYER

Operator's Manual



MODERN
AG PRODUCTS, LTD.

YOU'RE ALWAYS AHEAD...WITH A MODERN BEHIND.

P.O. BOX 790 • BEAUMONT, TX 77704
409.833.2665 • 1.800.231.8198 FAX: 409.726.8333
www.modernusa.com

001-0044

Go Galvanized!

For future reference, please record all applicable information pertaining to your machine in the table below. If you replace this manual, be sure to transfer **ALL** information into your new manual.

Machine Identification	
Model	
Serial Number	
Purchase Date	
First Operation	

Dealer Information

STORE NAME: _____

SHIPPING ADDRESS: _____

CITY: _____ STATE: _____ ZIP: _____

MAILING ADDRESS: _____

PHONE: _____ FAX: _____

EMAIL: _____

WEBSITE: _____

Salesman Information

NAME: _____

PHONE: _____

EMAIL: _____

Safety Information

Safety Precautions	4
Safety Labels	5

Introduction

General Information	6
Overview	7

Components

Cutting Deck	8-9
Mounting Plate	10-11
Main Adjustment Arm	12-13
TurnBuckle	14
Motor	15
Hydraulic Lines	16-19
Blade Carrier	20-21

Pre-use Checklist

Checklist.....	22
----------------	----

Operating Instructions

Mounting	23-24
Operation	25-26
Safety Hazards	27

Adjustments

Transition Process	28
Directly in Front	29
Offset	30-31
Vertical	32-33

Lubrication

Main Pivot Point	34
------------------------	----

Maintenance

Daily	35
Replacing Blades	35
Every 40 Hours Operation	35

Storage

Proper Storage	36
----------------------	----

Parts Breakdown

Parts Breakdown	37-39
-----------------------	-------

Limited Warranty

Warranty Information	40-41
----------------------------	-------

Overview

Throughout this section you will find various safety precautions and warnings. **READ, UNDERSTAND, and FOLLOW ALL** safety instructions contained in this section before attempting to operate your machine. This Owner's Manual is a key part of operational safety and must be maintained with the implement at all times.

To The Operator

KNOW THE EQUIPMENT BEFORE YOU START. Completely read and understand the safety section of this manual before operating this equipment. When operating any piece of equipment the primary responsibility is held by the operator. Do not allow anyone to operate this equipment who has not fully read and understood this manual. Follow instructions at all times while operating the Path Slayer. Failure to follow these instructions could result in serious injury or death. **Note: This unit is NOT for Skid Steer use.**

Before Using

1. **THOROUGHLY READ AND UNDERSTAND THE ENTIRE OWNER'S MANUAL BEFORE OPERATION OF YOUR MACHINE.**
2. Always disconnect hoses prior to making adjustments or servicing.
3. Inspect all fasteners prior to use.
4. Inspect blades, blade carrier, and bolts for wear.
5. Inspect the unit for any damage during transportation.
6. For stabilization while operating the Path Slayer, fill rear tires of your tractor with water for use as ballast. (Tractors under 50hp will need additional weight on rear. ie: Box Blade or Rotary Cutter.)
7. Must be 18 or older to operate the Path Slayer.
8. Never raise the Path Slayer above your tractors floorboard height when in the horizontal position.
9. Keep body and clothing away from all moving parts.
10. **DO NOT** attempt to repair the Path Slayer while hydraulic hoses are connected.
11. Use the machine only for the intended use.
12. **DO NOT** modify the machine in ANY way.
13. **DO NOT** use if any parts are missing or damaged.
14. **DO NOT** operate under the influence of any substance.
15. Always use ear, eye, and hand protection when using the cutter.
16. **DO NOT** operate if the motor is in the reversed rotation. **(COUNTER CLOCKWISE ONLY!!)**
17. **NEVER** operate around people, pets, or live stock (Stay Back 300').
18. Complete the pre-use check list before every operation.
19. **NEVER** approach cutter while tractor is running. (Some applications will allow the blades to spin down slowly.)
20. **NEVER** attempt to service and or change positions on uneven surfaces.
21. Always remove tractor from gear and apply parking brake before exiting.
22. Understand that the blades extend beyond the deck opening.
23. **DO NOT** operate the Path Slayer where there is not sufficient lighting.
24. Test **ALL** controls before you begin.
25. **DO NOT** exceed rated operating flow capacity of hydraulic motor, as the machine may become unstable.
26. **NEVER** leave the machine unattended when in the raised position.

Placement

Your Path Slayer comes equipped with safety labels in place. DO NOT remove these labels! They are placed to help you operate your machine in a safe manner. Read, understand, and follow their directions.

1. Make sure all safety labels are clean and legible.
2. Replace all damaged or missing labels.
3. Refer to this section for proper label placement.

Installing new safety labels

- a. Clean surface area where label is to be placed.
- b. Peel backing from label and press label firmly onto the surface.
- c. Squeeze out air bubbles with edge of a credit card or straight edge.



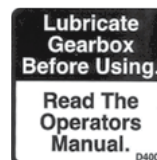
1



5



2



6



3



7



8



4



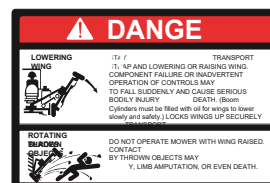
9



11



10



12



ITEM	PART NO.	DESCRIPTION	QTY.
.....	490-9000.....	COMPLETE DECAL SHEET.....	1
1	DO NOT ATTACH	1
2	LUBRICATE GEARBOX	1
3	THROWN OBJECTS	1
4	ROTATING BLADES.....	1
5	WARNING TO PREVENT INJURY	1
ADDITIONAL SAFETY DECALS BELOW			
6	490-1024.....	KEEP HANDS CLEAR	1
7	490-GALVCOAT	CAUTION: GALV COATING	1
.....	490-1023	MADE IN USA DECAL	1
.....	490-FEMA.....	FEMA MEMBER	1
10	490-1501.....	DANGER LOWERING WING.....	1
11 ...	490-PSCCAUTION. .	PATH SLAYER CAUTION	1
12 ...	475-5041.....	MODERN AG PRODUCTS	1

Application

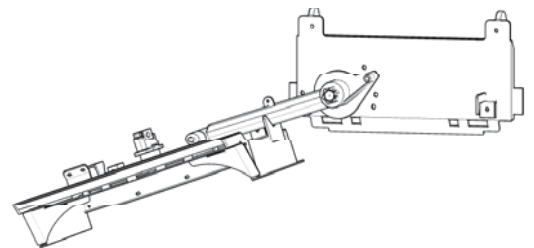
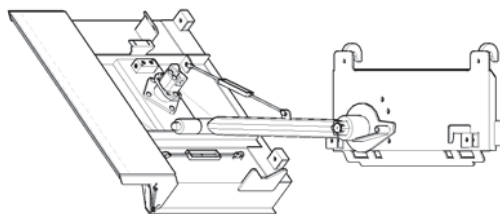
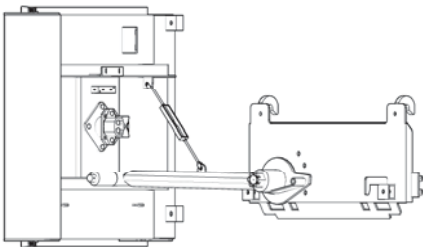
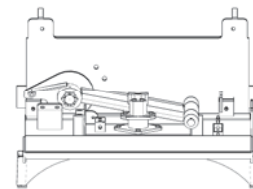
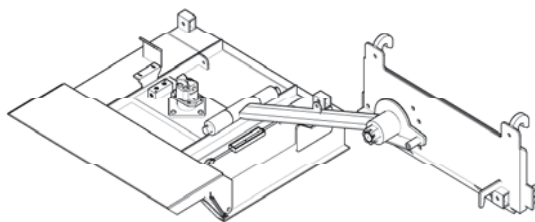
The Path Slayer (PS) is a light duty rotary cutter designed to clear overgrown roadways, light land management, and property maintenance.

The PS will easily cut up to 2-3" diameter limbs, brush, saplings, and underbrush. The Path Slayer has 11 positions that allow it to cut vertically, Offset, directly in front (level), or 25°, 35°, & 45° in the vertical and offset positions.

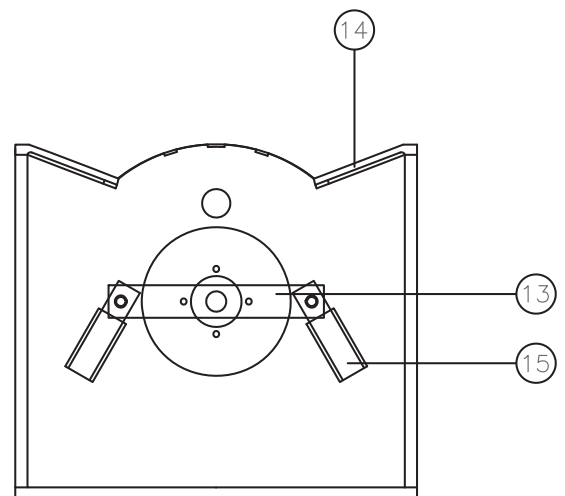
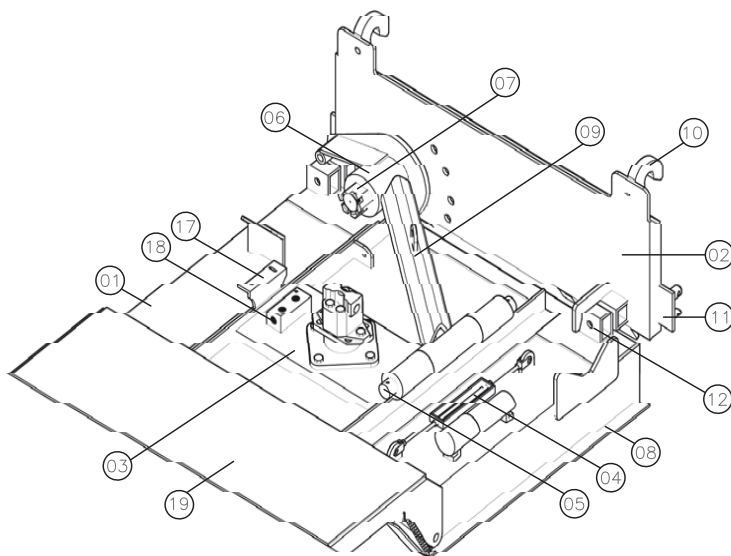
The Path Slayer (PS) attaches to the front of any FEL tractor with a SSQA or JD pin-style attachment system. For additional cost there are adapters available to fit most other applications.

The Path Slayer (PS) weighs just under 580 lbs.

In order for the Path Slayer brush cutter to operate to full potential, the tractor must have a hydraulic flow rate of at least 8 GPM, optimal flow is 10 GPM. Hydraulics are linear, 10 GPM equals 100% of the optimal flow, 8 GPM equals 80% of the optimal flow and so on. When purchasing the Path Slayer brush cutter, you will receive a unit equipped with 1/2" male/female coupler inlets.

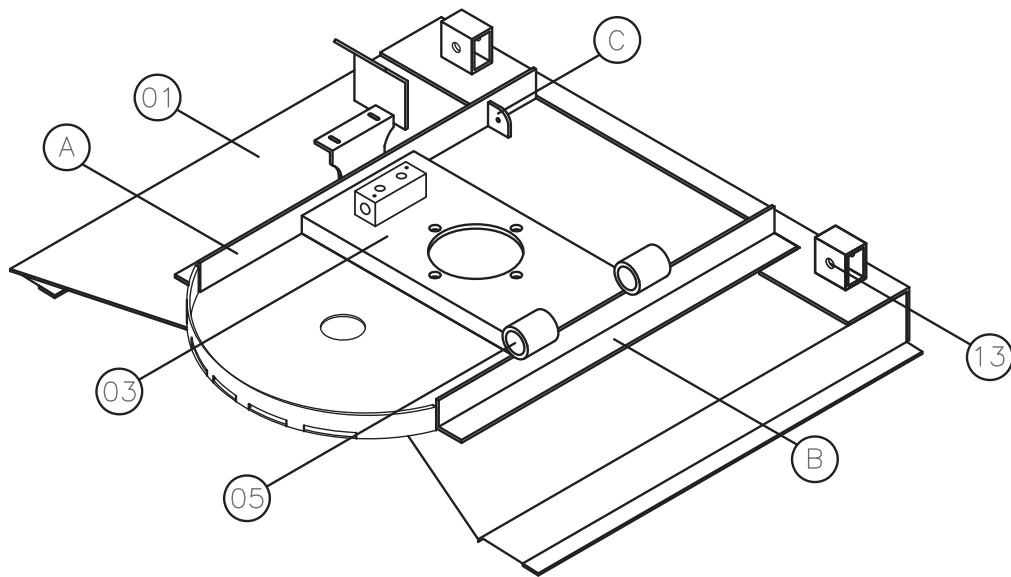


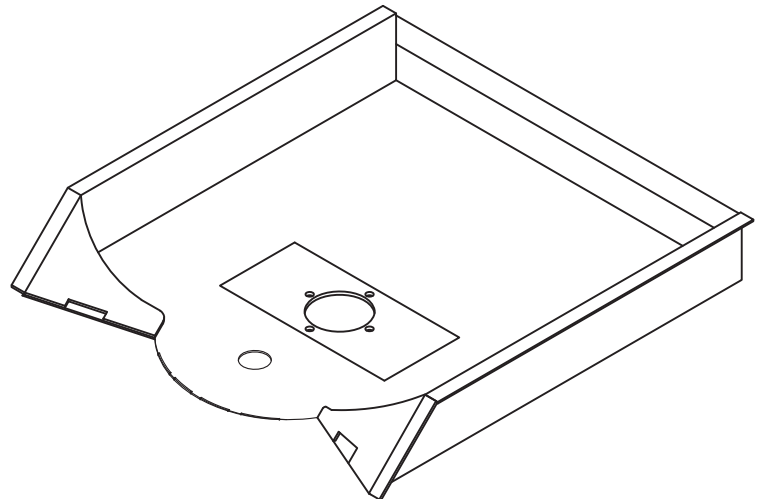
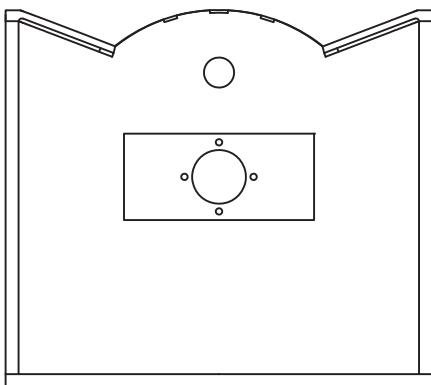
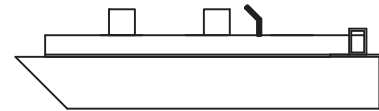
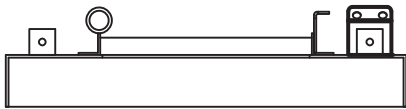
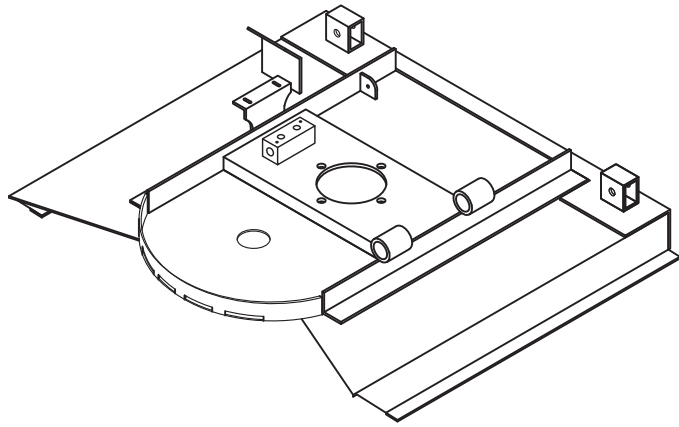
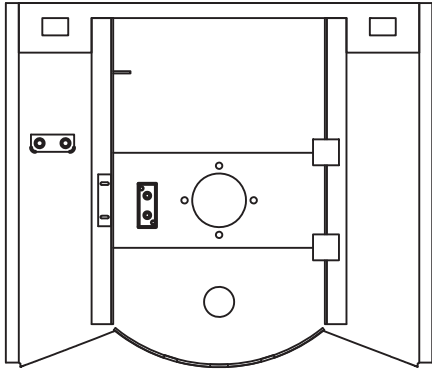
- (01)** Cutting Deck
- (02)** Mounting Plate
- (03)** Gear Box Plate
- (04)** TurnBuckle
- (05)** Main Adjustment Hinge
- (06)** Main Adjustment Arm
- (07)** Main Pivot Point
- (08)** Base Reinforcement Edge
- (09)** Main Arm Support
- (10)** Mounting Hooks
- (11)** Mounting Pins
- (12)** Tower Lock
- (13)** Blade Carrier
- (14)** Deck Reinforcement Edge
- (15)** Cutting Blades
- (16)** Quick Connect Bracket
- (17)** Flow Regulator
- (18)** Manifold
- (19)** Front Shield
- (20)** Position Adjustments *(Refer to pages 10-11)*
- (21)** SSQA Top Mount *(Refer to pages 10-11)*
- (22)** SSQA Bottom Mount *(Refer to pages 10-11)*



Cutting Deck (01)

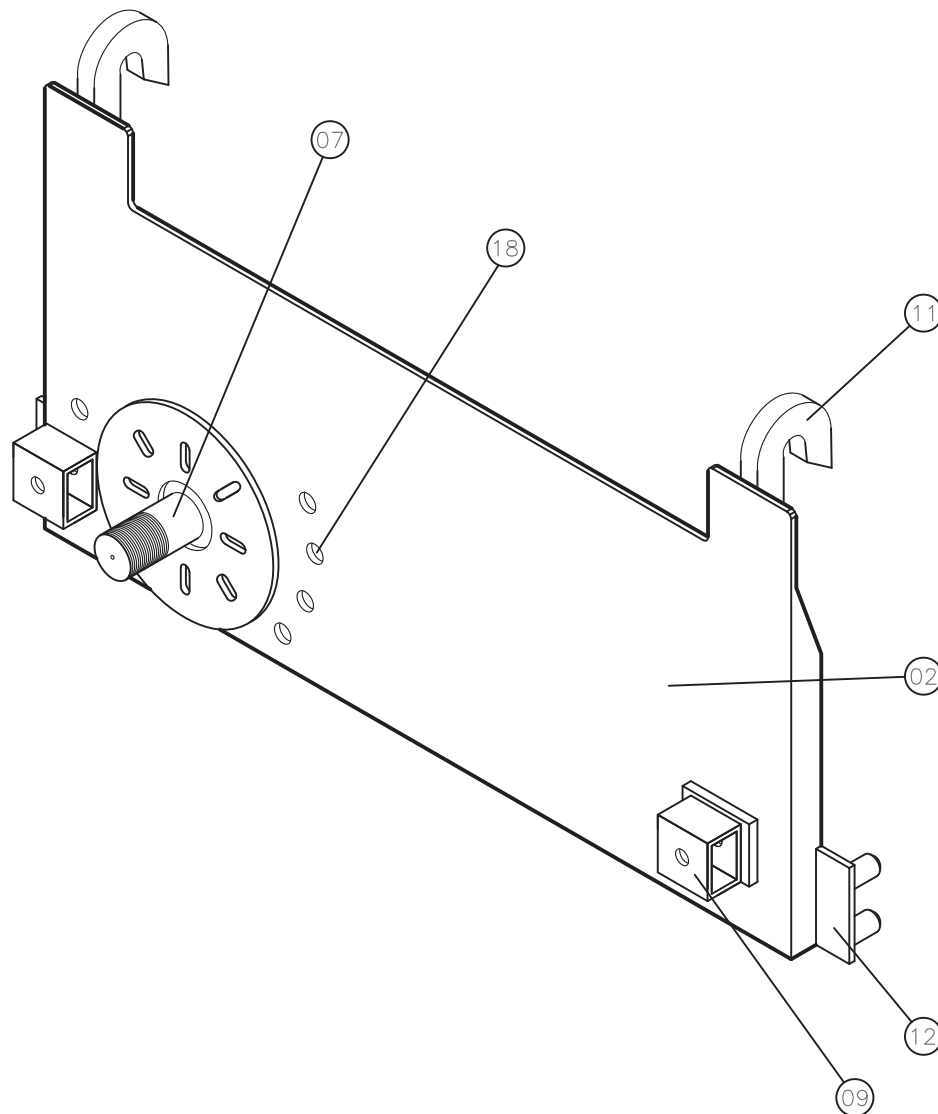
The cutting deck on the Path Slayer (PS) is the main platform that supports the motor, blades, and most adjustment components on the PS. When in the home position, all adjustment components are mounted on top of the deck including the Gear Box Plate (03), Turn Buckle (04), Adjustment Hinge (05), Main Adjustment Arm (06), Main Arm Support (09), and the Tower Locks (12). Mounted in the center of the deck there is a .188 thick plate with a 10 x 22 inch opening, this is where the motor mounts through the deck. This is called the Gear Box Plate (03). Closely surrounding the center hole are four mounting holes, these are for the spindle to be mounted to the deck of the PS. Approximately 9 inches on either side of the motor are two 90 degree angle iron deck supports (A&B) that run front to back of the PS and are approximately 24 inches in length. (Facing the unit) The left deck support (A) is supplied with a bracket (C) for the Turn Buckle (04) to connect once the PS is in the vertical and offset positions. The right deck support (B) is mounted to the Main Adjustment Hinge (05) which allows the PS to pivot into the vertical and offset positions while maintaining attachment to the Mounting Plate (02).



Cutting Deck (01) Con't

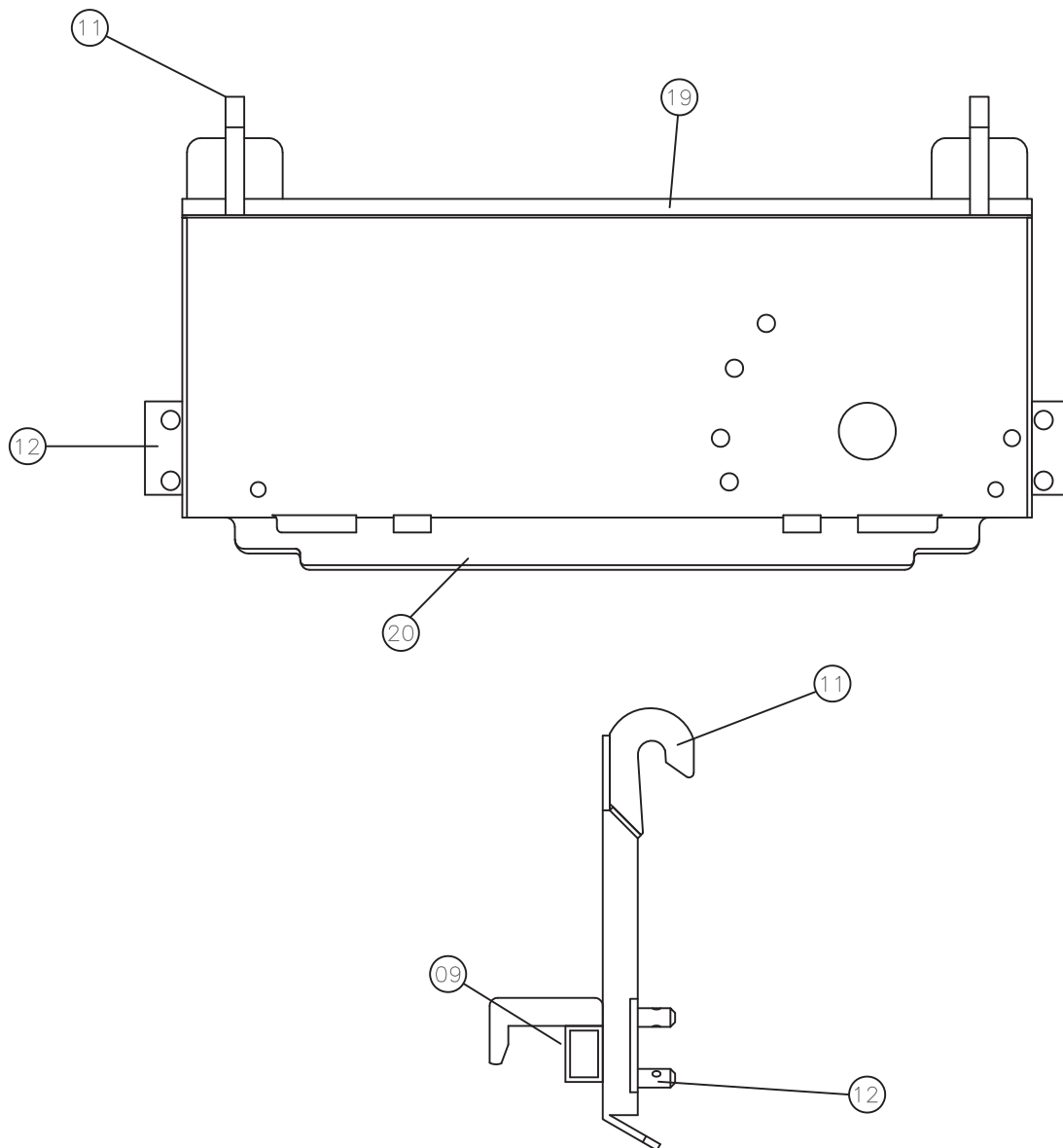
Mounting Plate (02)

The Mounting Plate (02) mounts vertically to the rear of the Cutting Deck (01) this allows the Mounting Plate (02) to act as the main support system for the PS. (Facing the unit) Offset to the left side of the Mounting Plate (02) is a roughly 3 inch mask boss, this attaches the Main Adjustment Arm (06), Turn Buckle (04), Main Adjustment Hinge (05), Main Arm Support (10), to the Cutting Deck (01) and operates as the Main Pivot Point (07). Surrounding this are 5 Position Adjustment (18) holes. By using the the Main Pivot Point (07) and the multiple Position Adjustments (18) it allows the the PS to transition up to 180 degrees to the vertical and offset positions. (Facing the unit) Near the bottom right corner of the Mounting Plate (02) a single Lock Bracket (09) is attached to lock the Cutting Deck (01) via Tower Locks (13) to the Mounting Plate (02) when in the home position.



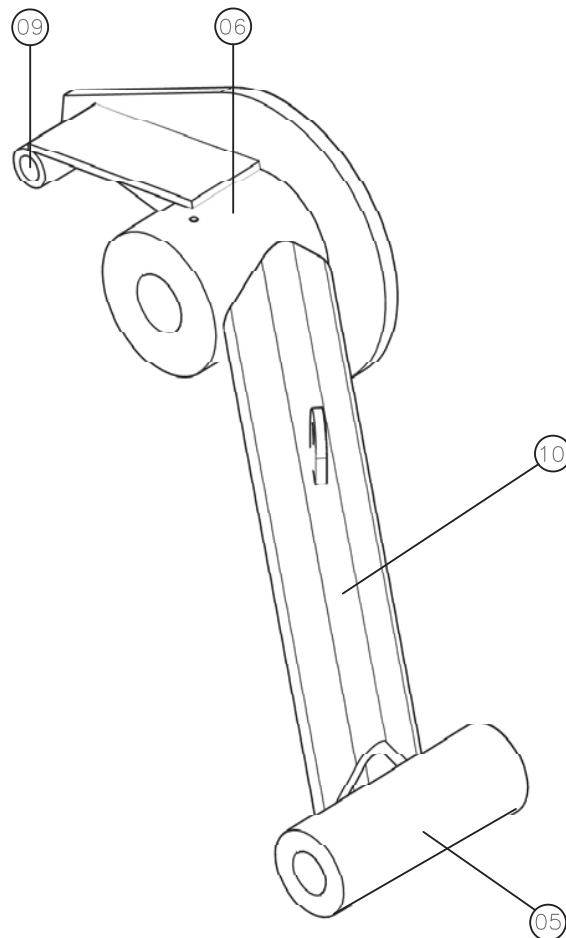
Mounting Plate (02) Con't

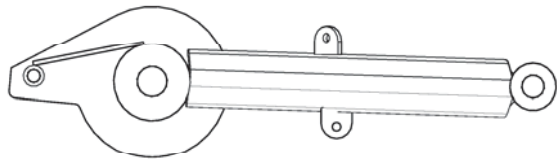
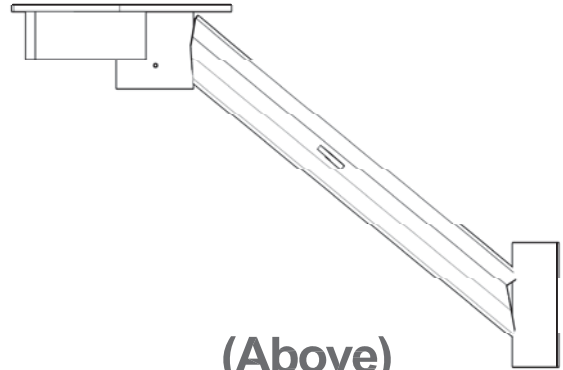
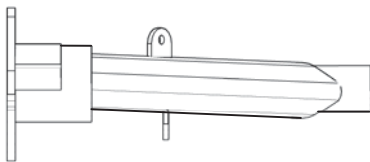
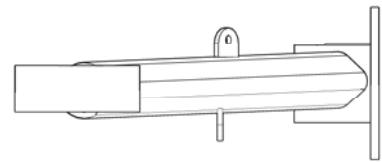
The Mounting Plate (02) is the main connection between the Path Slayer and the tractor. The PS supports two types of mounting systems, SSQA and Pin-Style. The SSQA is mounted by attaching a SSQA plate onto the backside of the PS Mounting Plate (02) using the SSQA Top (19) and Bottom (20) connection points. The Pin-Style is mounted by attaching the Mounting Hooks (11) located on the top left and right sides of the PS. Once the Mounting Hooks (11) are attached, the Mounting Pins (12) located on the lower left and right sides of the PS will then lock the PS to the Pin-Style loader.



Main Adjustment Arm (06)

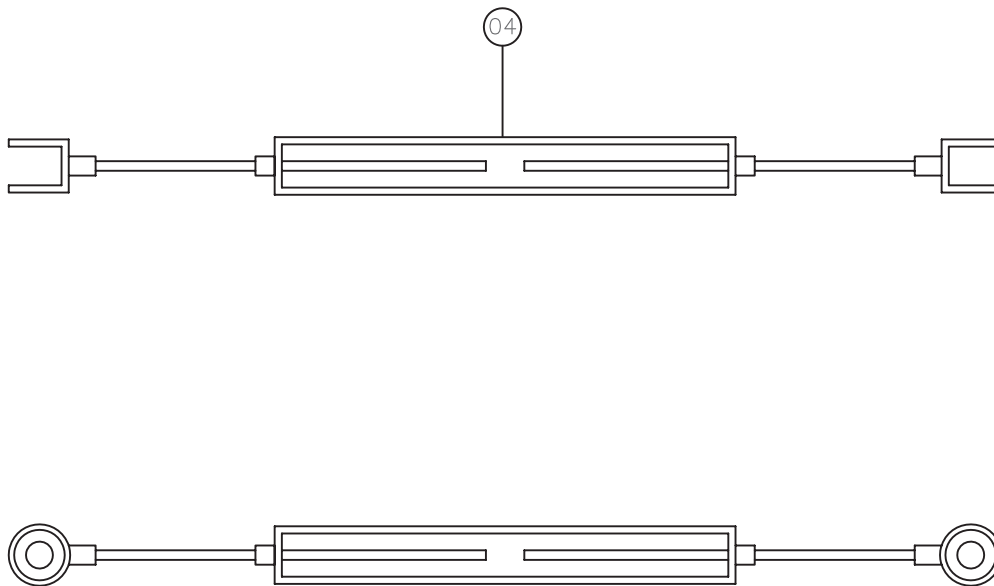
The Main Adjustment Arm (06) is the main connection between the Mounting Plate (02) and the Cutting Deck (01). This connection is made by attaching the Main Adjustment Arm (06) to the Mounting Plate (02) via the Main Pivot Point (07) and attaching the Cutting Deck (01) to the Main Adjustment Arm (06) via the Main Adjustment Hinge (05). This allows the PS Cutting Deck (01) to move 180 degrees from directly in front of the tractor to the vertical and offset positions while staying attached to the loader. Once in any of the positions the Main Adjustment Arm (06) is supported by the Main Support Arm (10) to keep the PS's structure stable while in transition or operation. Extending forward roughly 24 inches from the Main Adjustment Arm (06) is the Main Adjustment Hinge (05). This allows the Cutting Deck (01) to move 180 degrees around the Main Adjustment Arm (06) from the horizontal cutting positions to the vertical cutting positions. (Facing the unit) There are two Lock Brackets (09) attached to the left and right sides of the Main Adjustment Arm (06), the Lock Brackets (09) allow the Main Adjustment Arm (06) to lock to the Cutting Deck (01) via the Tower Locks (13) when in the home position.



Main Adjustment Arm (06) Con't**(Front)****(Above)****(Facing-Left)****(Facing-Right)**

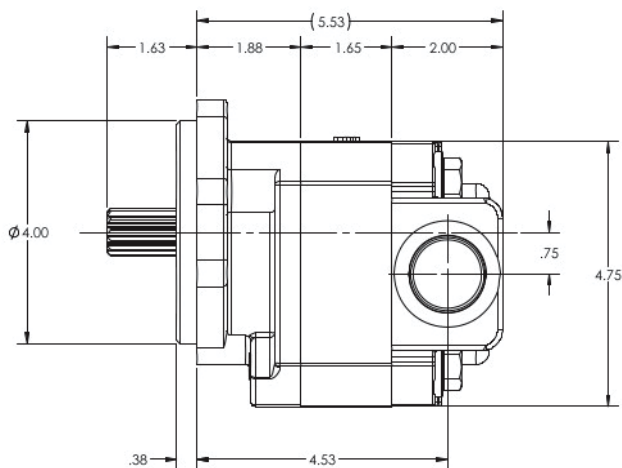
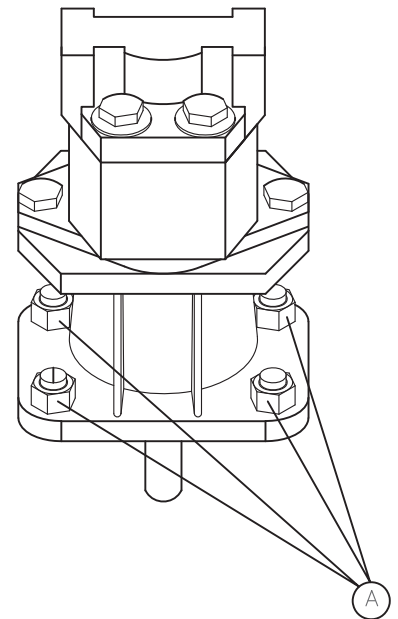
TurnBuckle (04)

The Turn Buckle (04) attaches to the Main Arm Support (10) once the PS has been locked into any of its positions. This allows the Main Adjustment arm to (06) to support the PS when in the vertical and extended positions.

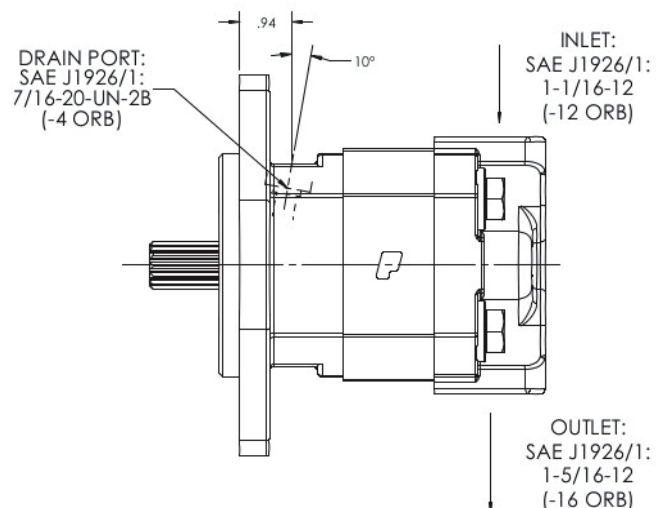


Motor (01)

The motor is the main component of the Path Slayer (PS). The 10 GPM Permco hydraulic motor is equipped with two SAE 7/8-14 ORB (O-Ring Boss) inlets. It is secured to the motor mount via four 5/8" x 2-1/2" socket caps with a 5/8" Toplock Nut (A) shown in figure 2. In order for the brush cutter to operate to full potential, the tractor must have a hydraulic flow rate of at least 9 GPM, optimal flow is 10 GPM. Hydraulics are linear, 10 GPM equals 100% of the optimal flow, 8 GPM equals 80% of the optimal flow and so on.

Figure 1*Figure 2*

DRIVE SHAFT:
SPLINED SAE B (13 TEETH)
DP: 16/32 PRESSURE ANGLE: 30°
ANSI B92.1-96



Hydraulic Lines

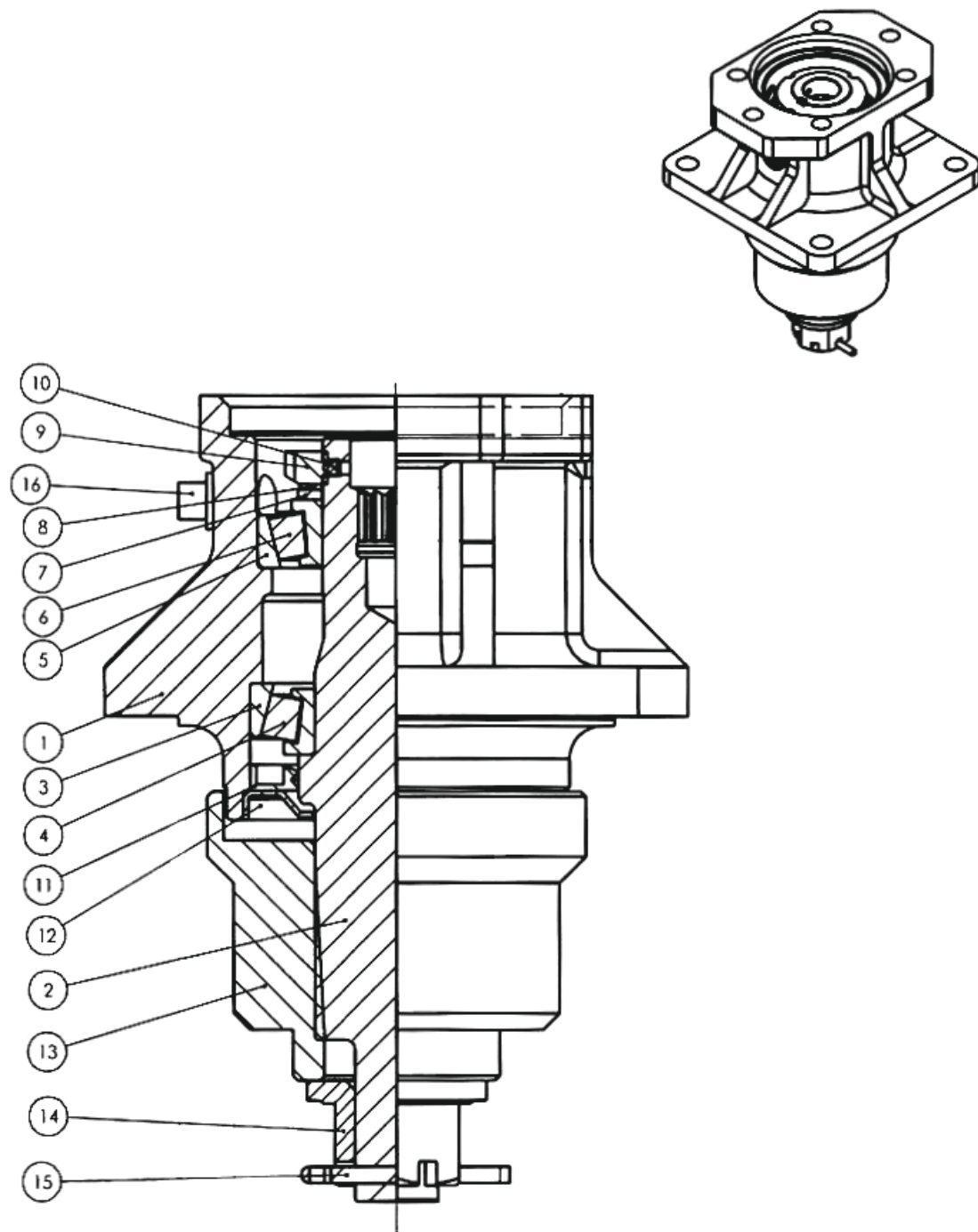
The Path Slayer (PS) requires two hydraulic lines to operate. (NOT INCLUDED) One for pressure (02) and one for the return (03).

**GEARBOX LUBRICATION**

1. The gearbox does not have oil in it during assembly. You must add oil prior to using the unit.
2. Unscrew both of the two plugs at the top of the gearbox.
3. With a small funnel fill one of the openings with gear oil (E P85W-140). (Approximately 8oz.)
4. When you see the oil in the other opening you have filled the gearbox. Do not overfill.
5. Screw both of the plugs back in the threaded holes.
6. You are now ready to use the unit.



GEARBOX ASSEMBLY/PARTS SECTION



GEARBOX ASSEMBLY/PARTS SECTION

401-0179 Gearbox MDH-40 Parts List

Item	Part Number	Description	Qty
1.....		HOUSING, MDH-40	1
2.....	MDH40-040778.....	SHAFT-13Z INPUT SPLINE-11	1
3.....	MDH40-050200.....	BEARING, CUP 30210Y	1
4.....	MDH40-050201.....	BEARING, CONE 30210X.....	1
5.....	MDH40-050239.....	BEARING, CUP 30209Y	1
6.....	MDH40-050240.....	BEARING, CONE 30209X.....	1
7.....	MDH40-090464.....	WASHER WITH TANG	1
8.....	MDH40-130099.....	LOCK WASHER, M45	1
9.....	MDH40-120136.....	LOCKNUT, M45 X 1.5 BEARING	1
10.....	MDH40-110304.....	SET SCREW, M5	2
11.....	MDH40-060183.....	LIP SEAL-OUTPUT	1
12.....	MDH40-240567.....	SEAL PROTECTOR	1
13.....	MDH40-210034.....	BLADE HUB 15T	1
14.....	MDH40-120050.....	NUT, HEX SLOTTED, 1-14UNS	1
15.....	MDH40-100001.....	COTTER PIN 5MM X 50MM.....	1
16.....	MDH40-140023.....	PLUG, PIPE SQUARE HEAD, 3/8" -18NPT	2

Hydraulic Hoses

To ensure your safety and that no harm is caused to you, the components of your Path Slayer, or your tractor it is **CRUCIAL** that the hydraulic line system is installed correctly. If you fail to follow these instructions **ANY** warranty on your Path Slayer will be voided. Follow these steps at all times while operating the Path Slayer. Failure to follow these instructions could result in serious injury or death.

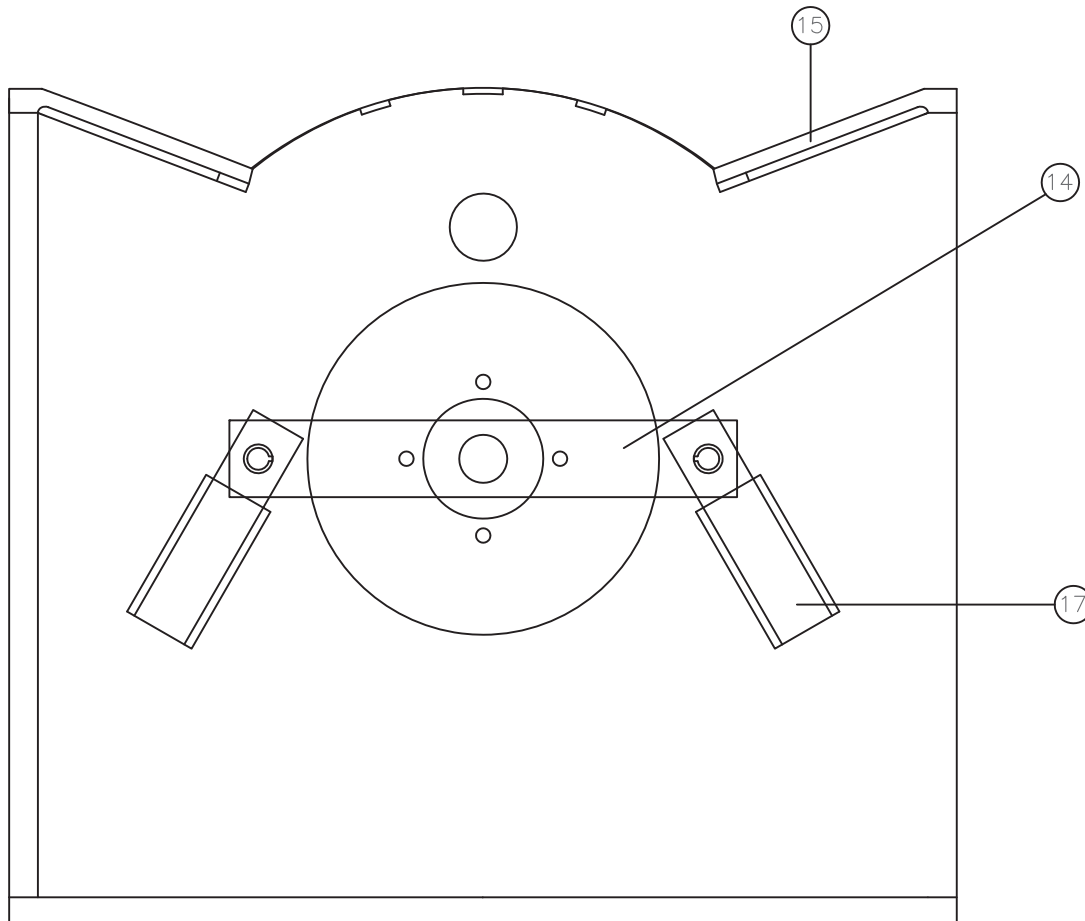
Plumbing

1. With the Path Slayer attached measure your tractor to determine approximate length of hoses. (Hose lengths will differ per tractor) To keep from reversing the hydraulic hoses, it is recommended that you use male and female quick disconnect fittings to attach the hydraulic hoses from your Path Slayer to the tractor. (Shown in figure A)
2. To find the proper hydraulic hose length from the Path Slayer to your tractor you must position the Path Slayer in its offset position (see pg. 28 for position change instructions) and then angle the loader arm of the tractor to approximately -35 degrees. The length should be approximately 7-1/2 feet.
3. Attach pressure hose to one side of your tractors rear remotes.
4. Route the pressure hose along the tractor until you have reached the front of you tractors boom.
5. Route the return hose along the tractor until you have reached the front of you tractors boom.
6. Attach one pressure (02) and one return hose (03) onto your Path Slayer using the two Quick Connect inlets on the left side of your Path Slayer. (Shown on Figure 1)
7. Attach the hydraulic hoses on your Path Slayer to the hydraulic hoses on the tractor using quick disconnect fittings. (Shown in figure A)
8. Secure all hoses to tractor.
9. Once connected the air must be bled out of the hydraulic hoses. To do this you must briefly engage the hydraulics until the motor on the Path Slayer begins to rotate.
10. Check hydraulic fluid and fill to operating level per tractor specifications.



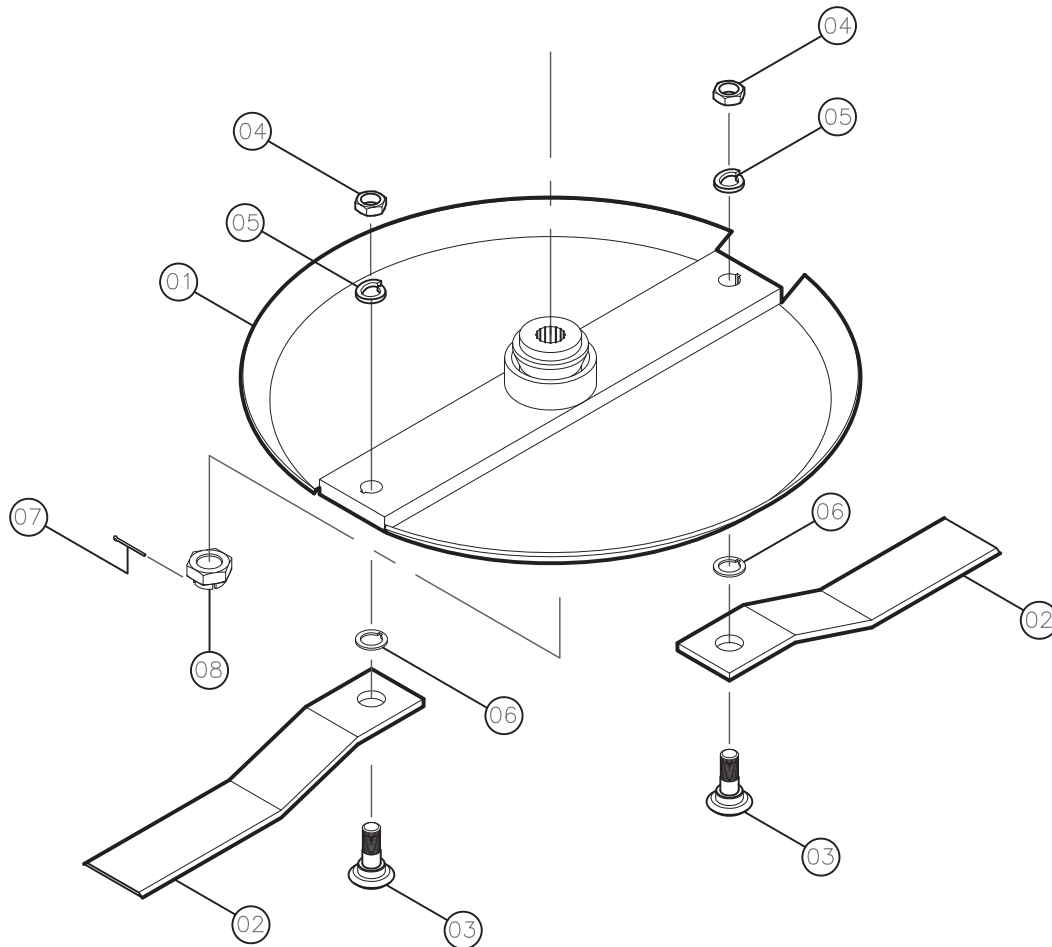
Blade Carrier (14)

The Blade Carrier (14) is a pan component roughly 23 inches long that attaches the Cutting Blades (17) to the spindle housing. This allows the Cutting Blades (17) to rotate freely around the spindle housing. 1 Cutting Blade (17) is mounted on each end of the Blade Carrier (14) giving the PS 44 inches of overall cutting width. The Deck Reinforcement (16) is located below the Cutting Deck (01), this keeps the Cutting Deck (01) structurally sound while in operation. The Deck Reinforcement Edge (15) is a 1/2 inch thick border that covers the front edge of the PS. This Deck Reinforcement Edge (15) protects the Cutting Deck (01) from any debris the PS may come in contact with while in operation.



PARTS LIST

PATH SLAYER BLADE CARRIER ASSEMBLY



NO.	PART NUMBER	QTY.	DESCRIPTION
01.....	401-PSBB	1	BLADE BAR ASSEMBLY
02.....	401-0154	2	BLADE
03.....	125-907	2	BLADE BOLT
04.....	125-925.....	2	NUT
05.....	900-8771	2	FLATWASHERS
06.....	830-1018NH	2	NOTCHED WASHER, HARDENED
XX	412-8043-01	2	BLADE BOLT KIT (3,4,56)
07.....	647-100	1	5/32" x 2" COTTER PIN
08.....	501-0266	1	Hex Nut 1" Castl.

<u>Check-list</u>	
	Cutting Deck is free of objects.
	Unit is properly attached to the tractor and locked in.
	No degradation of metal or welds.
	All fasteners are secure. (pins, nuts, bolts, washers)
	Blade carrier is secure.
	Blades and blade fasteners are secure.
	All warning labels are in place.
	Make sure radiator is clear of debris.
	Hydraulic system connected correctly.
	Hydraulic fluid levels normal.
	Inspect blades, blade carrier, and bolts for wear.
	Hydraulic Hoses (Not Kinked/Tight Connections)
	Motor is properly connected.
	Blade carrier bolts properly torqued/cotter pin in place.
	Spindle and motor bolts properly torqued.
	Correct blade rotation (counter clockwise)
	Path Slayer pivot point properly greased.
	Tractor power brake fluid level and condition.
	No oil leaks.
	Tractor ROPS is in good condition.
	ROPS is in the raised position.
	Tractor engine oil level and condition.
	Tractor engine coolant level and condition.
	Sufficient lubrication at all lube points.
	Tractor lights are clean and functional.
	Tractor power steering fluid level and condition.

Mounting



DANGER

When mounting your Path Slayer a crushing hazard exists. **DO NOT** allow anyone to stand between or get near the front of the tractor when attaching.

Always make sure hydraulic hoses are disconnected before attaching or detaching your Path Slayer. Follow these steps at all times while operating the Path Slayer. Failure to follow these instructions could result in serious injury or death.

Preparing Cutter for Hook-up

1. The Path Slayer should be on a hard flat level surface.
2. Make sure there are no items or debris between the tractor and the Path Slayer.

Pin Style Loaders (JD) *(Refer to Figure 1 on pg. 22)*

1. Slowly approach the Path Slayer using the front hydraulic controls to align the front of the boom with the Path Slayer.
2. Place the tractors attachment points under the Path Slayer mounting hooks.
3. Make sure mounting pins are aligned and continue moving the tractor forward until the mounting plate on the Path Slayer is flush against the tractors mounting plate.
4. Place tractor gear selector in park or set park brake, shut engine off, and remove ignition key.
5. Install the locking pins on the back of the mounting plate to lock the Path Slayer into place. **NEVER ATTEMPT OPERATE OR MOVE WITHOUT LOCKING THE PATH SLAYER IN PLACE.**
6. Attach the hydraulic pressure and return hoses from the tractor to the Path Slayer. *(See pages 16-17 for hydraulic plumbing diagram)*

Universal Quick Attach (QA) *(Refer to Figure 2 on pg. 22)*

1. Slowly approach the Path Slayer using the front hydraulic controls to align the front of the boom with the Path Slayer.
2. Place the tractors attachment points under the Path Slayer mounting plate.
3. Continue moving the tractor forward until the mounting pins lock into place and the Path Slayer is flush against the tractors mounting plate.
4. Place tractor gear selector in park or set park brake, shut engine off, and remove ignition key.
5. On the tractor, push the locking arms down until they have locked the Path Slayer in place. **NEVER ATTEMPT OPERATE OR MOVE WITHOUT LOCKING THE PATH SLAYER IN PLACE.**
6. Attach the hydraulic pressure and return hoses from the tractor to the Path Slayer. *(See pages 16-17 for hydraulic plumbing diagram)*
7. **IMPORTANT NOTICE:** On some tractor applications equipped with the QA system you may need to trim the top hooks of the Path Slayer to ensure full operational clearance of your tractors boom.

Mounting

Figure 1

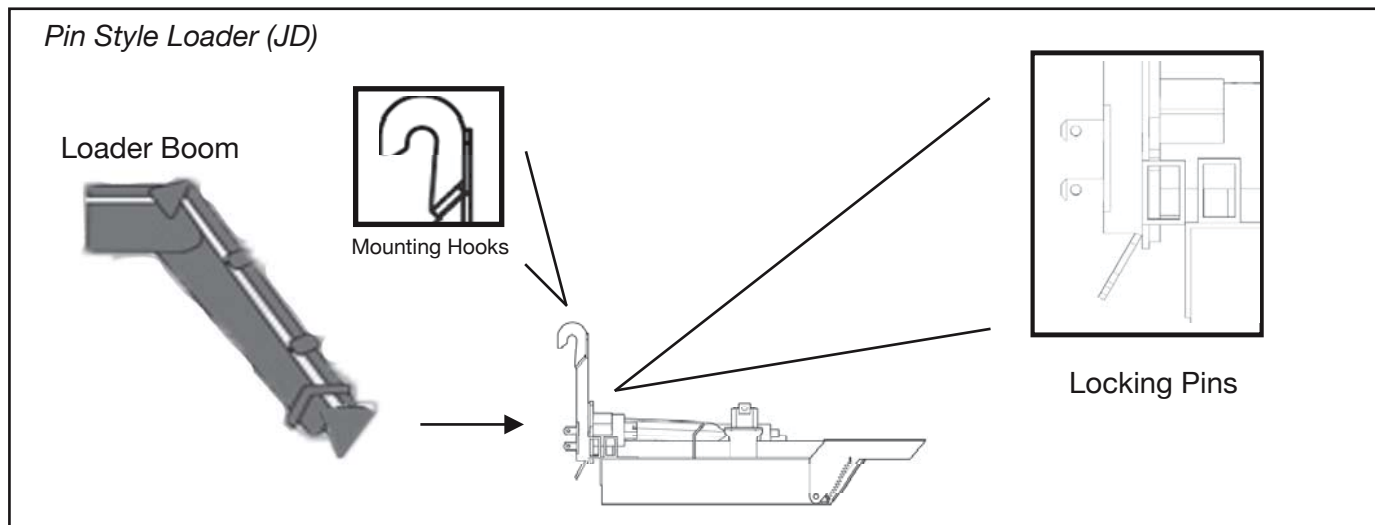
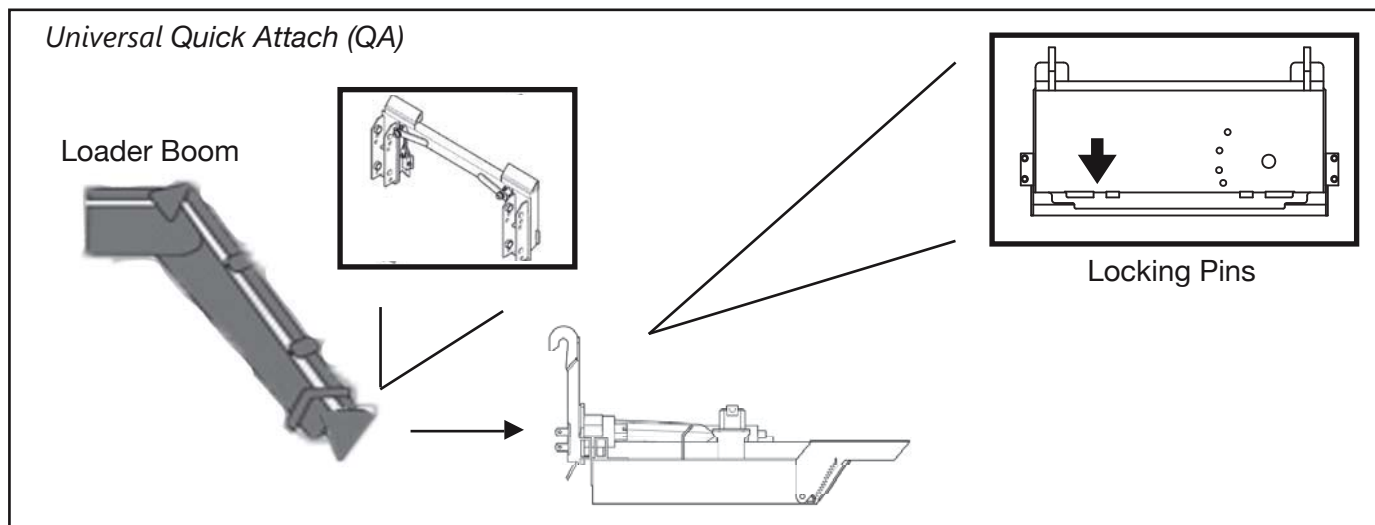


Figure 2



Tractor Requirements

In addition to correct hydraulic flow and horsepower, the tractor must also be properly equipped with operator protection including a Roll Over Protection Structure or (ROPS).

- Minimum hydraulic flow is 9GPM
- Maximum flow is 21GPM with standard motor.
- Certified Roll Over Protection Structure (ROPS)
- Rear Remotes

Cutting Operation

1. Before attempting to operate, read and understand the owners manual.
2. Activate the auxiliary hydraulics with engine at idle.
3. Gradually increase engine speed.
4. Allow motor up to spin up to full speed.
5. Be sure that the Path Slayer is operating correctly *ie: No vibration and proper rotation.*
6. Begin forward travel while monitoring blade rotation.

CAUTION

Never raise the Path Slayer to the point where your view is obstructed.

Always make sure you can see while cutting.

Never operate in populated areas where thrown objects could injure persons or damage property.

Never raise the Path Slayer to a point where you can see the blades. If you can see the blades, then the unit is too high and you are in danger.

Never operate the Path Slayer under the influence of any substances.

Never leave the Path Slayer unattended when it is in any of its raised positions.

Never attempt to cut while the tractor is in the reverse gear.

Cutting Large Brush

The Path Slayer is capable of cutting limbs and brush up to 3" in diameter. When using the Path Slayer to cut large brush or limbs slowly approach the area with the Path Slayer approximately 1-2 feet off of the ground. Make sure the motor on the Path Slayer is spinning at full speed. The blades extend roughly 2-3" beyond the front opening of the Path Slayer and as the Path Slayer approaches the brush continue to drive the tractor forward into the target area until the brush has been cut.

Cutting Grass or vegetation

The Path Slayer is designed to cut all types of grass and light vegetation around ponds, road sides, and ditches. To cut grass or light vegetation place the Path Slayer approximately 1-2 inches above the ground and slowly drive forward while keeping attention to the cutting path to make sure no foreign objects are obstructing the path of the Path Slayer.

Overheating

The motor on the Path Slayer is not designed to withstand continuous stalling. If the motor is continuously stalled while operating you may cause the unit to overheat. Avoid stalling the unit as much as possible.

Trouble Shooting

Jammed or stalled: If while cutting, you stall or jam the unit you need to follow these steps to safely return the unit back to its functioning standard.

1. Return the tractor back to idle speed
2. Disengage axillary hydraulics
3. Park the tractor on a level surface
4. Place the tractor in park gear
5. Set parking break
6. Shut engine off
7. Wait for all motion to come to a complete stop
8. Remove ignition key
9. Disconnect all hydraulic hoses from the Path Slayer
10. Remove any tangled debris from the bottom of the unit

Restarting blade rotation: Once you have cleared any tangled debris that may have hindered the operation of the Path Slayer you will need to return the unit to its functioning standard.

1. Reconnect hydraulic hoses going to the Path Slayer
2. Turn tractor engine to the ON position
3. Slowly engage auxiliary hydraulics
4. Idle tractor up to proper RPM (PTO speed)
5. Spin the Path Slayer back up to full speed

Repeated stalling of rotary motor: If your Path Slayer continues to stall repeatedly, review and inspect all components. If the components have been inspected and reviewed and no issues are found, then review and inspect the size/density of the material being cut to make sure it fits the parameters of the Path Slayer's capabilities.

Safety

It is the operators main responsibility to ensure that the Path Slayer is being operated as safe as possible at all times. Before attempting to operate the Path Slayer, make sure you have read the owners manual. READ, UNDERSTAND, and FOLLOW all safety directions associated with the Path Slayer.

Follow instructions at all times while operating the Path Slayer. Failure to follow these instructions could result in serious injury or death.

- WEAR SAFETY GLASSES, safety shoes, hard hat, hearing protection and gloves when operating or repairing equipment.
- WEAR appropriate breathing respirator when operating in dusty conditions to avoid respiratory diseases.
- DO NOT wear loose clothing or jewelry while near rotating or moving parts, this could cause an entanglement injury.
- DO NOT operate any equipment while under the influence of any substance.
- DO NOT allow anyone to operate equipment under the influence of any substance.
- STAY ALERT, prolonged operation can cause lack of attention, STOP and REST.
- DO NOT allow anyone to stand between or get near the front of the tractor when attaching.
- NEVER attempt to repair or change positions on the Path Slayer while hydraulic hoses are connected. (Refer to page 26 for correct troubleshooting procedures)
- DO NOT operate if the motor is in the reversed rotation. (COUNTER CLOCKWISE ONLY!!)
- NEVER operate around people, pets, or live stock (Stay Back 300').
- Complete the pre-use check list before every operation.
- NEVER approach cutter while tractor is running. (Some applications will allow the blades to spin down slowly.)
- NEVER attempt to service the Path Slayer while on uneven surfaces.
- NEVER attempt to change positions on the Path Slayer while on uneven surfaces.
- Always remove tractor from gear and apply parking brake before exiting.
- Understand that the blades extend 2-3 inches beyond the deck opening.
- DO NOT operate the Path Slayer where there is not sufficient lighting.
- Test ALL controls before you begin.
- DO NOT exceed rated operating flow capacity of hydraulic motor, as the machine may become unstable.
- NEVER leave the machine unattended when in the raised position.
- DO NOT operate the Path Slayer on a tractor not equipped with a ROPS.
- DO NOT operate the tractor without the ROPS in the upright position.
- ALWAYS wear seatbelt.
- ALWAYS pay attention to cutting path.
- DO NOT operate the Path Slayer in populated areas.

Transition Process

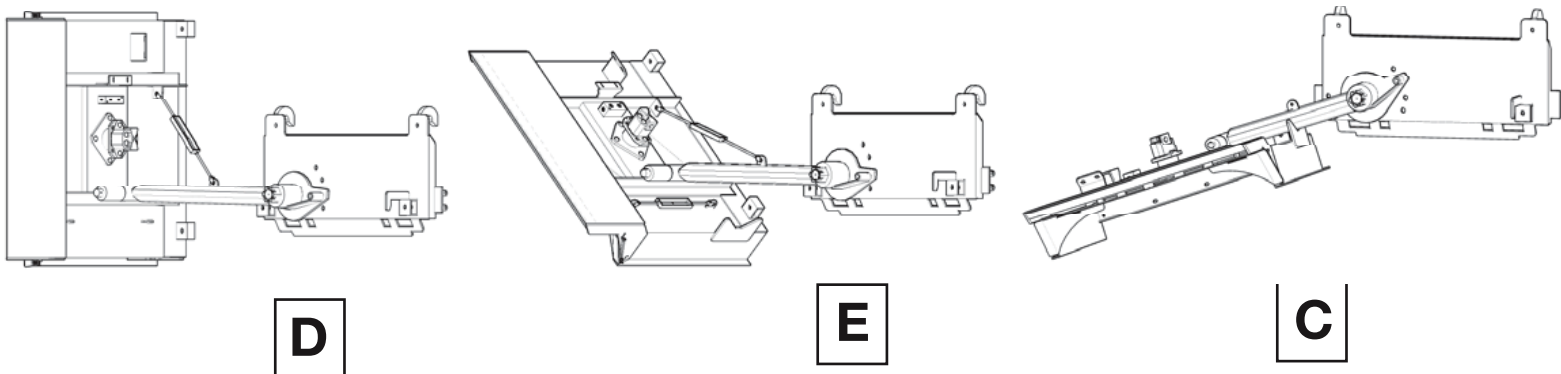
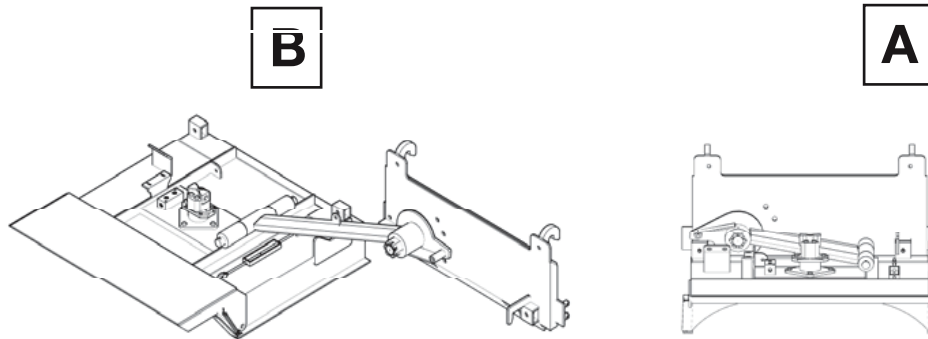
Your Path Slayer is capable of cutting in 11 different positions. Once you have successfully connected the Path Slayer to your tractor and familiarized yourself with all of its components, it is time to begin learning the transition process. This section will go over how to properly transition your Path Slayer into each of those positions.

Before you get started

- Make sure tractor gear selector is in park or set park brake.
- Make sure the engine is off.
- Make sure ignition key is removed.
- Make sure the tractor is parked on a level surface.
- Make sure all hydraulic hoses are disconnected from the Path Slayer.

Positions

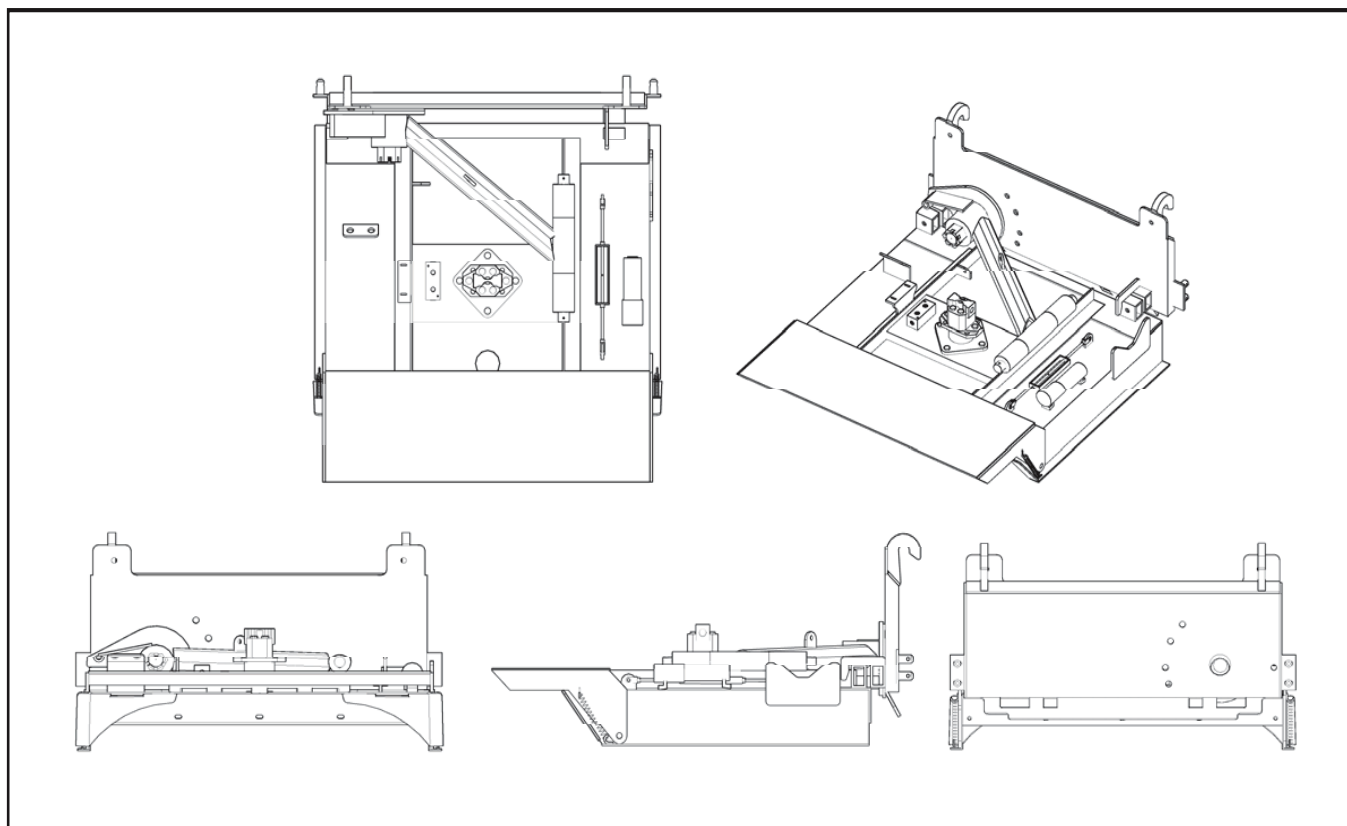
1. Home (Directly in front) **[A]**
2. Offset (0 degrees level) **[B]**
3. Offset (25 degrees lowered)
4. Offset (35 degrees lowered) **[C]**
5. Offset (25 degrees raised)
6. Offset (35 degrees raised)
7. Vertical (90 degrees upright) **[D]**
8. Vertical (25 degrees lowered)
9. Vertical (35 degrees lowered) **[E]**
10. Vertical (25 degrees raised)
11. Vertical (35 degrees raised)



Directly in Front (Home)

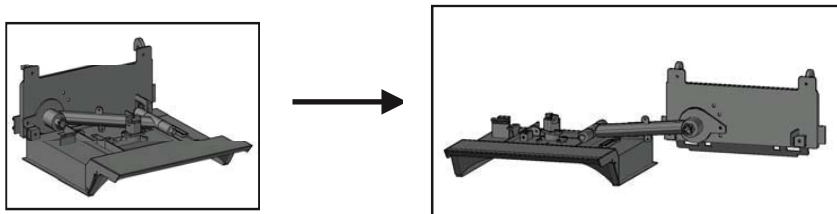
The directly in front or “home” position is the position that your Path Slayer is delivered in. (Refer to [Figure 1](#) for visual reference) The Path Slayer should ALWAYS be placed in the home position when transporting, storing or mounting/dismounting from the tractor.

Figure 1



Offset

This position allows the Path Slayer to extend from directly in front of the tractor to horizontally beside the tractor. The offset position is the recommended position for cutting around ponds, near ditches, and along roadsides. On this page you will be shown how to correctly move the Path Slayer from the home position (*Shown on pg. 29*) to the offset position.

**Instructions****CAUTION**

While changing positions on the Path Slayer there is a crushing hazard. DO NOT place fingers, hands, or body between the Path Slayer and tractor while changing positions.

1. Make sure all hydraulic hoses are disconnected from the Path Slayer.
2. Lift the boom of the tractor until the Path Slayer has enough clearance between the ground to point directly down.

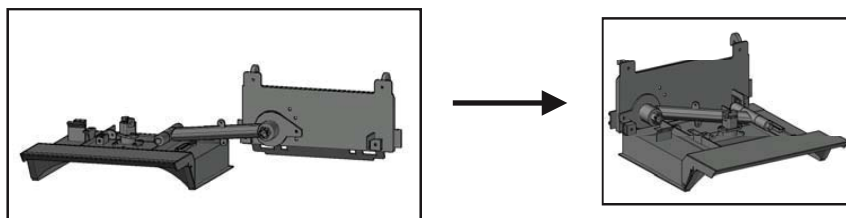


STOP before going any further make sure you have read and completed the “*Before you get started*” section on page 28.

3. Pull both pull pins on the left and right sides of the Path Slayer.
4. Facing the front of the tractor push the right side of the Path Slayer toward the front of the tractor. This will cause the Path Slayer to rotate around the main pivot point.
5. Facing the front of the tractor walk to the left side and push the left corner of the Path Slayer until it is parallel with the front of the tractor.
6. From the left side pull the Path Slayer until it extends completely out from the tractor.
7. Once the Path Slayer has been completely extended, pull the keeper pin from the position adjustment pin, and lock it into the desired position hole.
8. On the backside of the mounting plate the position adjustment pin will protrude roughly 1/2”. Place the keeper pin that you previously removed through the exposed hole of the position adjustment pin.
9. Reinstall both pull pins on the deck of the Path Slayer.
10. Reinstall both hydraulic Lines on the Path Slayer.

Returning Back to Home Position (From Offset)

When you are finished cutting with the Path Slayer in any of its positions, it is very important that you return it back to the home position. The Path Slayer is not designed to be transported or stored in any other position except the home position. On this page you will be shown how to correctly move the Path Slayer from the offset position back to the home position. (Shown on pg. 29)

**Instructions****CAUTION**

While changing positions on the Path Slayer there is a crushing hazard. DO NOT place fingers, hands, or body between the Path Slayer and tractor while changing positions.

1. Make sure all hydraulic hoses are disconnected from the Path slayer.
2. Lift the boom of the tractor until the Path Slayer has enough clearance between the ground to point directly down.

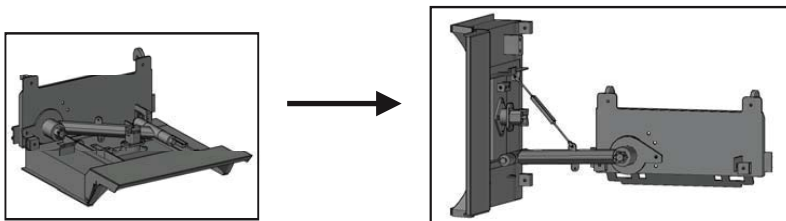


STOP before going any further make sure you have read and completed the “Before you get started” section on page 28.

3. Pull both Pull pins on the left and right sides of the Path Slayer.
4. On the backside of the mounting plate the position adjustment pin will protrude roughly 1/2”. Remove the keeper pin from the position adjustment pin.
5. Pull the position adjustment pin until you see the small keeper pin hole.
6. Place the keeper pin into the hole on the position adjust meant pin. This allows the Path Slayer to rotate freely around the main pivot point.
7. Pivot the Path Slayer until the deck is perpendicular with the mounting plate.
8. Facing the tractor push the Path Slayer towards the tractor until it pivots parallel with the front of the tractor.
9. Facing the tractor go to the left side of the Path Slayer and while keeping the deck of the Path Slayer parallel with the front of the tractor, push the deck of the Path Slayer until it reaches the home position.
10. Reinstall both Pull pins on the deck of the Path Slayer.
11. Reinstall both hydraulic Lines on the Path Slayer.

Vertical

This position allows the Path Slayer to extend from directly in front of the tractor to Vertically beside the tractor. The vertical position is the recommended position for trimming over hanging tree limbs, brush along shooting lanes, and light vegetation along overgrown roads or pathways. On this page you will be shown how to correctly move the Path Slayer from the home position (*Shown on pg. 29*) to the vertical position.

**Instructions****CAUTION**

While changing positions on the Path Slayer there is a crushing hazard. DO NOT place fingers, hands, or body between the Path Slayer and tractor while changing positions.

1. Make sure all hydraulic hoses are disconnected from the Path Slayer.
2. Lift the boom of the tractor until the Path Slayer has enough clearance between the ground to point directly down.

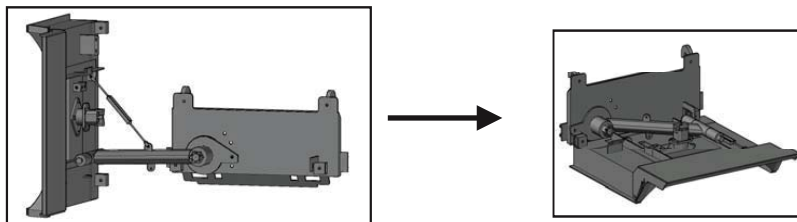


STOP before going any further make sure you have read and completed the “*Before you get started*” section on page 28.

3. Pull both Pull pins on the left and right sides of the Path Slayer.
4. Facing the front of the tractor push the right side of the Path Slayer toward the front of the tractor. This will cause the Path Slayer to rotate around the main pivot point.
5. Facing the front of the tractor walk to the left side and push the left corner of the Path Slayer until it is parallel with the front of the tractor.
6. From the left side pull the Path Slayer until it extends completely out from the tractor.
7. Once the Path Slayer has been completely extended, pull the keeper pin from the position adjustment pin, and lock it into the desired position hole.
8. On the backside of the mounting plate the position adjustment pin will protrude roughly 1/2”. Place the keeper pin that you previously removed through the exposed hole of the position adjustment pin.
9. Remove the keeper pin from the TurnBuckle.
10. Pivot the Path Slayer until the deck is perpendicular with the mounting plate.
11. Reattach the Turn Buckle to the top mounting bracket and lock it in with the keeper pin you previously removed.
12. Reinstall both hydraulic Lines on the Path Slayer.

Returning Back to Home Position (From Vertical)

When you are finished cutting with the Path Slayer in any of its positions, it is very important that you return it back to the home position. The Path Slayer is not designed to be transported or stored in any other position except the home position. On this page you will be shown how to correctly move the Path Slayer from the vertical position back to the home position. (Shown on pg. 29)

**Instructions****CAUTION**

While changing positions on the Path Slayer there is a crushing hazard. DO NOT place fingers, hands, or body between the Path Slayer and tractor while changing positions.

1. Make sure all hydraulic hoses are disconnected from the Path Slayer.
2. Lift the boom of the tractor until the Path Slayer has enough clearance between the ground to point directly down.

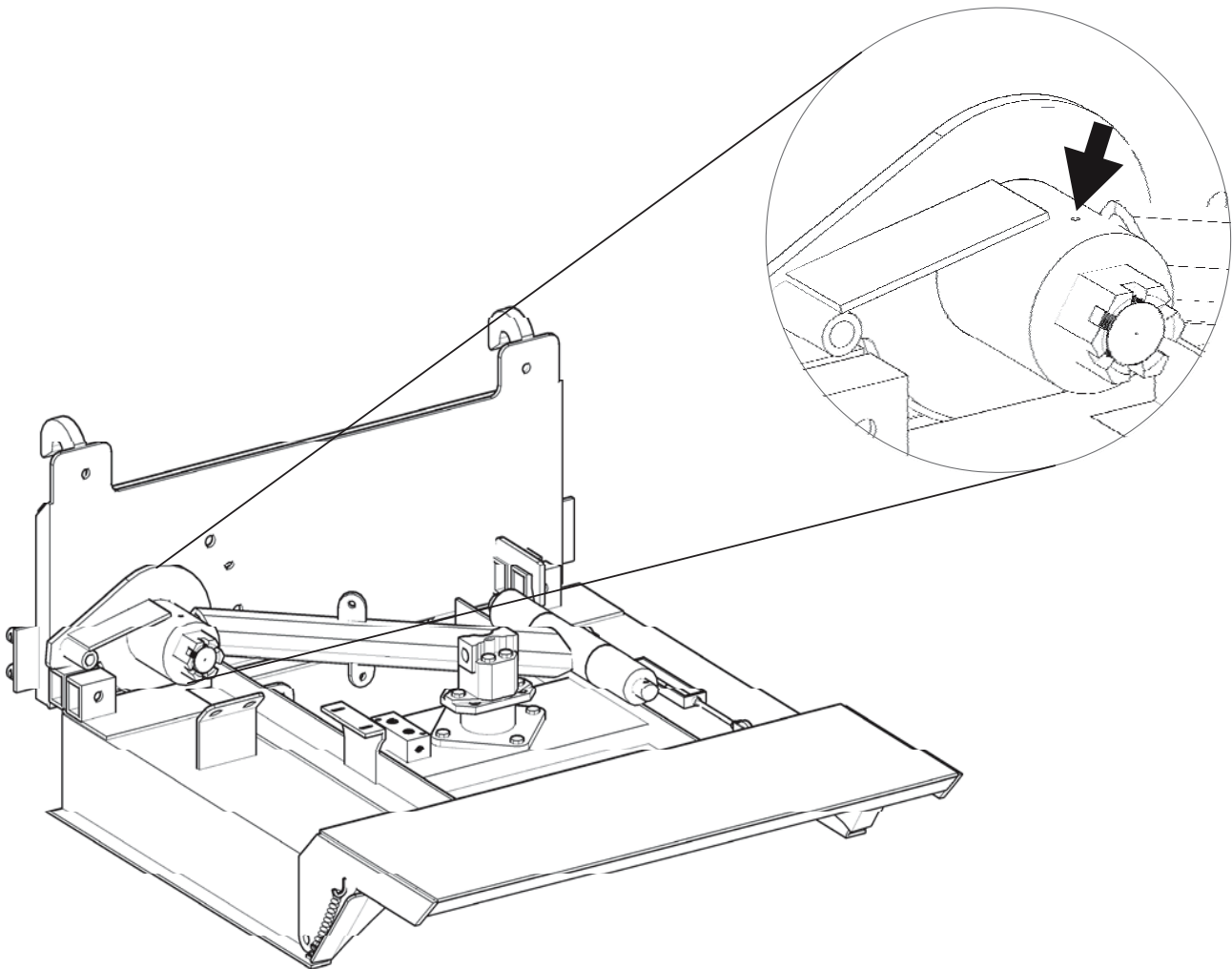


STOP before going any further make sure you have read and completed the “Before you get started” section on page 28.

3. Remove the keeper pin from the Turn Buckle.
4. Pivot the Path Slayer until the deck is perpendicular with the mounting plate.
5. Reattach the kickstand to the bottom mounting bracket and lock it in with the keeper pin you previously removed.
6. On the backside of the mounting plate the position adjustment pin will protrude roughly 1/2”. Remove the keeper pin from the position adjustment pin.
7. Pull the position adjustment pin until you see the small keeper pin hole.
8. Place the keeper pin into the hole on the position adjust meant pin. This allows the Path Slayer to rotate freely around the main pivot point.
9. Pivot the Path Slayer until the deck is perpendicular with the mounting plate.
10. Facing the tractor push the Path Slayer towards the tractor until it pivots parallel with the front of the tractor.
11. Facing the tractor go to the left side of the Path Slayer and while keeping the deck of the Path Slayer parallel with the front of the tractor, push the deck of the Path Slayer until it reaches the home position.
12. Reinstall both Pull pins on the deck of the Path Slayer.
13. Reinstall both hydraulic Lines on the Path Slayer.

Main Pivot Point

The main pivot point is where the main pivot arm attaches the deck of the Path Slayer to the mounting plate. This point allows all movement of the Path Slayer and must be properly maintained. To maintain the main pivot point it must always be properly greased before use. The main pivot point is located on the left side of the Path Slayer and is surrounded by a red circular plate. The Pivot point is equipped with one grease fitting. It is recommended to check the main pivot point prior to every use. To check the main pivot point you need to rotate the main adjustment arm. If the main adjustment arm rotates with no resistance or feels loose the pivot point needs to be greased.



General

Routine maintenance is key to the longevity of any implement. It is very important that you maintain your Path Slayer as described below.

**WARNING**

To avoid serious injury or death make sure you follow these steps before attempting to service or repair the Path Slayer.

- Make sure tractor gear selector is in park or set parking brake.
- Make sure the engine is off.
- Make sure ignition key is removed.
- Make sure the tractor is parked on a level surface.
- Make sure all hydraulic hoses are disconnected from the Path Slayer.

Daily

- Check for debris on deck of the Path Slayer.
- Check all hardware and tighten if necessary.
- Make sure all pins are in place and secure.
- Make sure the TurnBuckle is in place and secure.
- Check blades for damage and sharpness, replace if necessary. (If blades are in need of replacement, you **MUST** replace the mounting hardware as well.)
- Check blade mounting hardware.
- Check blade carrier hardware.
- Check hydraulic system for leaks.
- Make sure all safety and warning decals are present and legible.

Blade Replacement

Before attempting to replace blades make sure you have completed all steps in the “WARNING” section of this page. Failure to complete these steps could result in serious injury or death. NEVER attempt to weld or straighten damaged blades.

1. Move the Path Slayer into the vertical position. (*Refer to pages 32-33*)
2. Lower the boom of the tractor until the Path Slayer is level and resting on the ground.
3. Remove bolt and top nut from each blade. (*Refer to image on pg. 21*)
4. Replace blades.
5. Reinstall with **NEW** bolt, **NEW** flat washers, and **NEW** top lock nut on each blade.
6. Reinstall both hydraulic hoses.

Every 40 Hours Operation

- Check for hose deterioration
- Check for weld deterioration
- Check for hydraulic motor wear

Overview

To keep your Path Slayer in its best condition, we recommend following the storage procedures listed below. It will also make sure your Path Slayer is off to a good start when needed. If your Path Slayer is going to be stored for long periods of time we STRONGLY recommend following these procedures to increase the life of your Path Slayer.

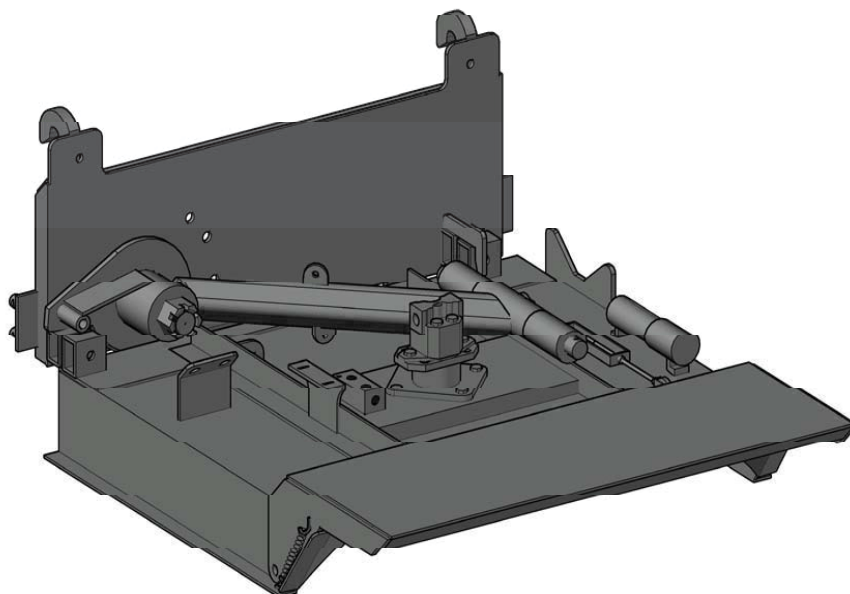
Preparing Unit For Storage

1. Complete daily checklist.
2. Clean all mud, dirt, and debris from the Path Slayer.
3. Tighten any loose hardware.
4. Replace any safety/warning decals if damaged or illegible.
5. Touch up any chipped or scratched areas.
6. Connect hydraulic lines into each other.
7. Store the unit in a dry area.

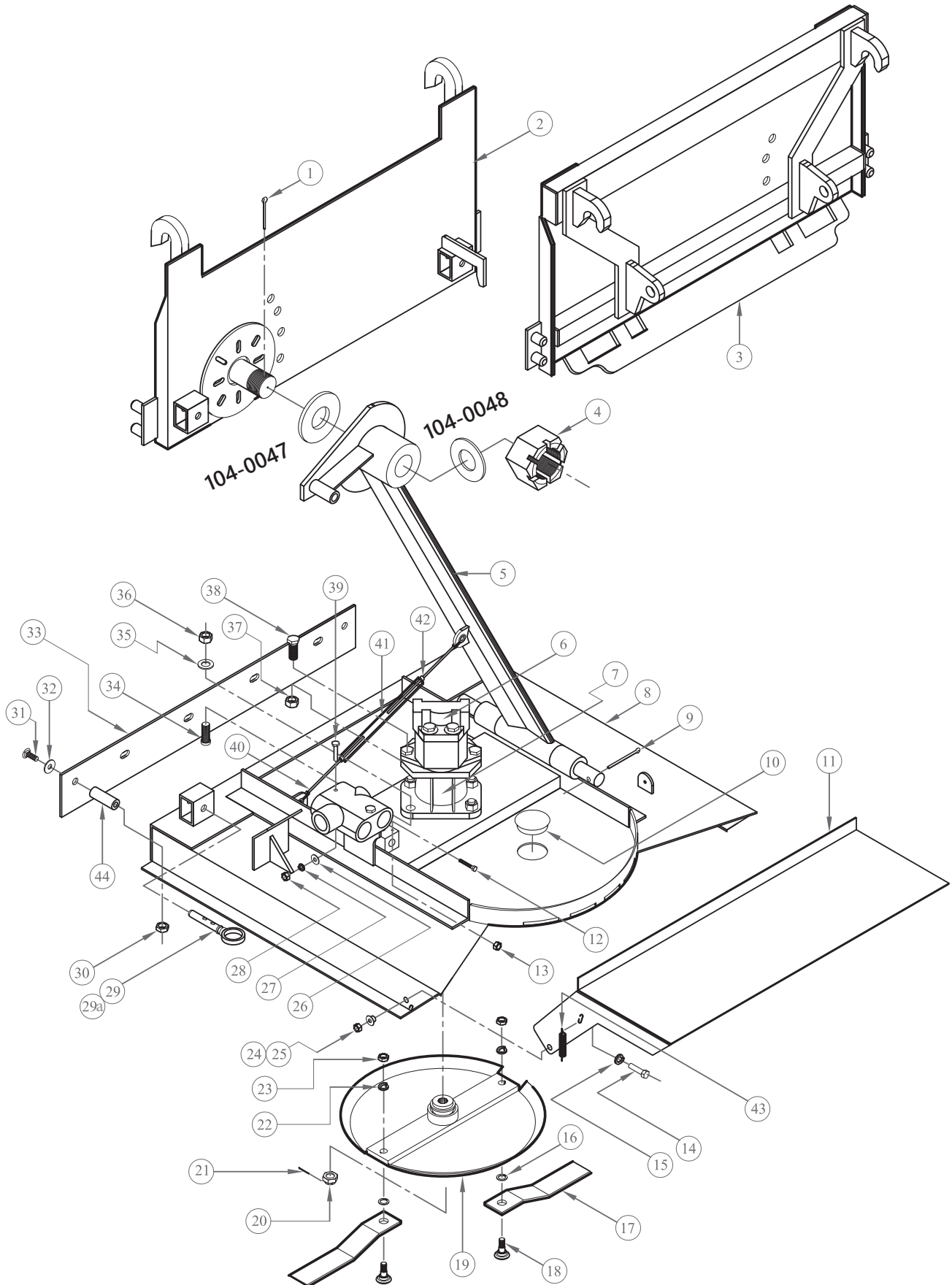
Removing from Storage

1. Remove any protective coverings installed.
2. Complete daily checklist.
3. Check all hardware, tighten if necessary.
4. Check hydraulic hoses for deterioration.

Proper storage position shown below.



PATH SLAYER PARTS SECTION



PATH SLAYER PARTS SECTION

ITEM	PART NO.	QUANTITY	DESCRIPTION
1.	647-2505	1	1/4" x 5 Cotter Pin
2.	401-PSMountplate	1	PS Mount Plate
3.	401-PSMountplateEH.	1	PS Mount Plate Euro Hitch
4.	900-8883.	1	3" Slotted Nut
5.	401-PSMAST.	1	Master
6.	711-3402.	1	Hyd. Pump
7.	401-0179.	1	Skid Steer Bottom Gear Box
8.	401-PSDeckwip.	1	Path Slayer Deck
9.	412-0081.	2	Cotter Pin 3/8"x3-1/2"
10.	116-1656.	1	3" Rd. Caplug
11.	401-PSShield.	1	Shield Weldment
12.	400-0018.	2	5/16" x 3" Gr. 8 Bolt
13.	412-628-5.	2	5/16" Nylock Nut
14.	412-2085.	2	1/2 x 2-1/2 Bolt
15.	412-0072-01.	2	1/2 Flatwasher
16.	830-1018NH.	2	Notched Washer, Hardener
17.	401-0154.	2	Blade
18.	125-907	2	Blade Bolt
19.	401-PSBB.	1	Blade Carrier
20.	501-0266.	1	Hex Nut 1" Castl.
21.	647-100.	1	5/32" x 2" Cotter Pin
22.	900-8771.	2	Lock Wash
23.	125-925.	2	Jam Nut
24.	412-3243.	2	1/2" Nylock Nut
25.	105-4435.	2	Guard Bushing
26.	638-4.	2	1/4" Flat Washer
27.	636-4.	2	1/4" Lock Washer
28.	412-0082.	2	1/4" Hex Nut
29.	401-PSLongpin.	1	Long Pin
29a.	154-5	1	Hitch Pin
30.	412-0058.	4	1/2" Hex Nuts
31.	412-0042-02.	4	1/2" x 1-1/2" Bolt Gr. 5
32.	412-0072-01.	4	1/2" Flat Washer
33.	104-0044.	1	Rear Rubber Guard
34.	412-0024.	4	5/8" x 2-1/2 Gr. 8 Bolt
35.	412-0076-01.	4	5/8" Gr. 8 Flat Washer
36.	412-3500.	4	5/8" Toplock Nut
37.	412-2006.	2	9/16" Top lock
38.	412-2007.	2	9/16" x 2-1/2" Gr. 8 Bolt
39.	605-415.	2	Hex Cap Screw
40.	405-3016.	1	Galv. Nut 5/8" RH
41.	651-5812.	1	Turn Buckle
42.	412-0059-01.	1	Hex Nut 5/8"-11 LH Thread Galv
43.	104-0045.	2	Extension Spring

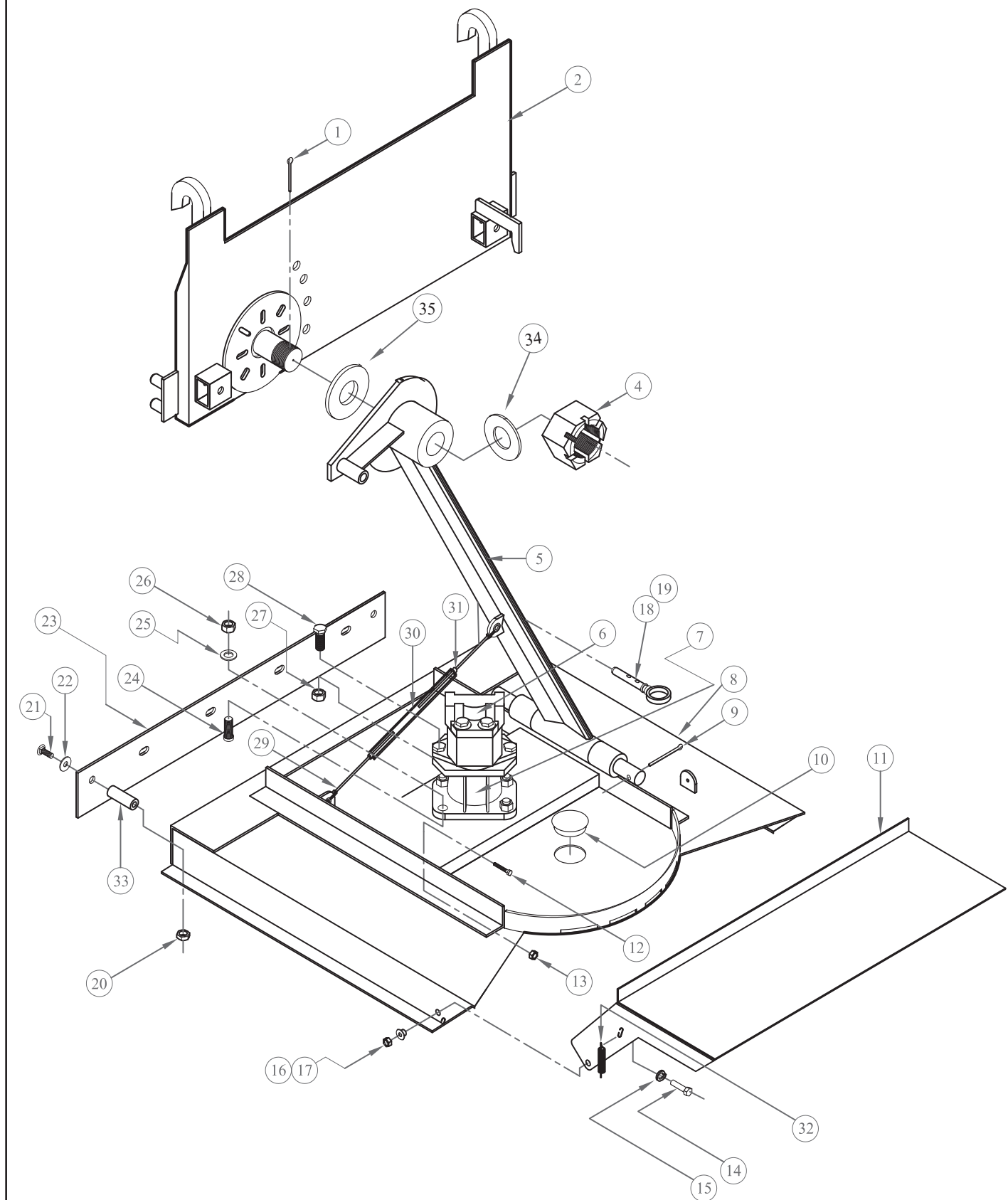
Kit 412-8043-01 includes ONE EACH of 16, 18, 22, & 23 from the parts list above

PATH SLAYER PARTS SECTION



ITEM	PART NO.	QUANTITY	DESCRIPTION
1.....	227-5053	1	1/2" CPLR FM Pipe
2.....	227-5054	1	1/2" NPLE FM Pipe
3.....	800-PS8837	1	Straight Adapter, 1/2" Male
4.....	800-PS02	1	10.5 Hard Tube
5.....	800-PS2577.....	1	Elbow 90° 1/2" Male JIC
6.....	800-PS2608.....	2	Elbow 90° 1/2" Male Pipe
7.....	401-PS20	1	PS HYD Hose 20"
8.....	800-PS6735.....	1	PS Outlet Connect
9.....	800-PS8890	1	PS Inlet Connector
10.....	401-PS16.....	1	PS Hyd Hose 16"
11.....	105-4409	1	Manifold
12.....	800-PS01	1	PS 12.625 Hard Tube
13.....	401-PS24	1	PS Hyd Hose 24"
14.....	262-1510	1	Hyd. Flow Regulator
15.....	401-PS16-01	1	PS Hyd Hose 16" Main

COMPACT PATH SLAYER PARTS SECTION

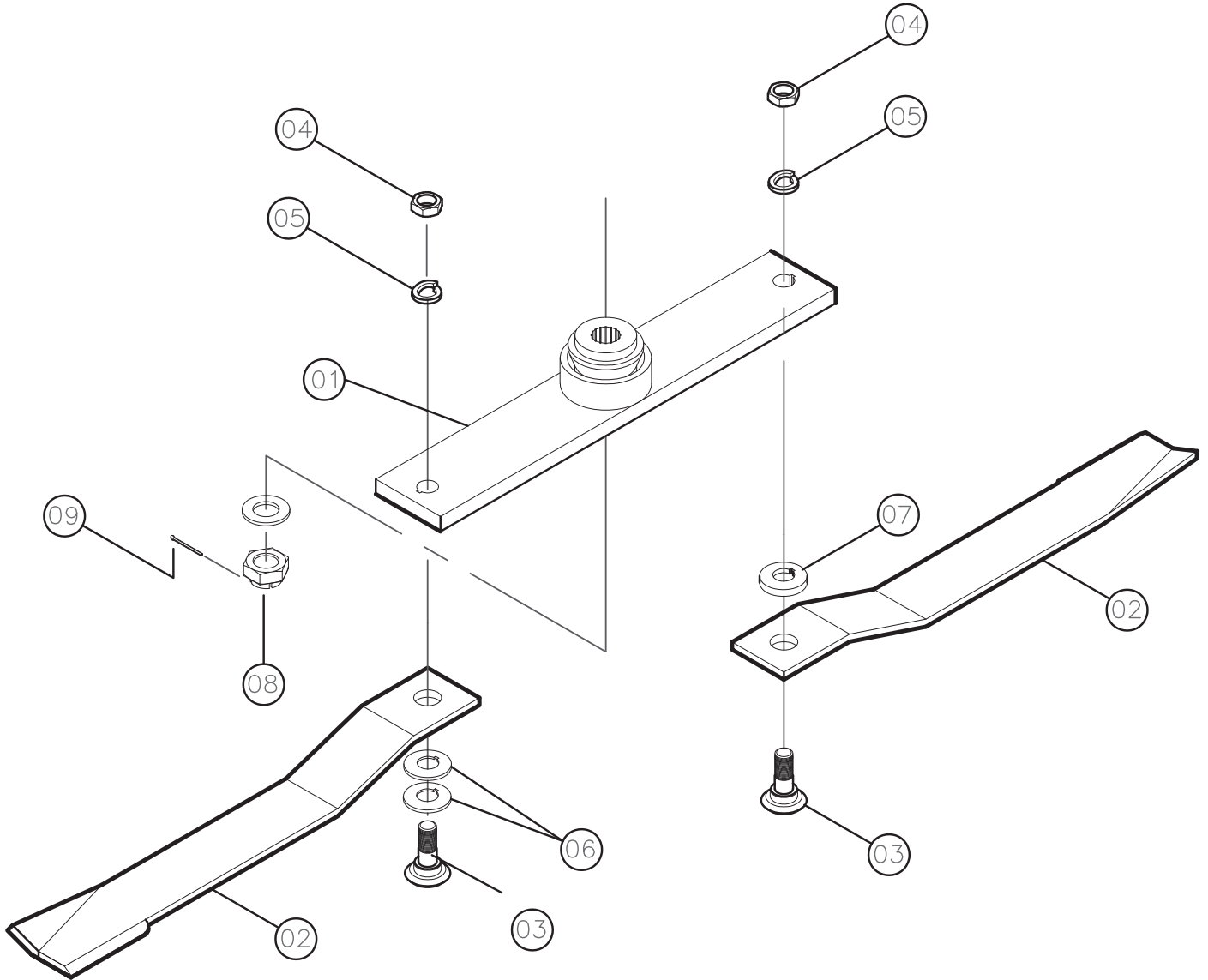


COMPACT PATH SLAYER PARTS SECTION

ITEM	PART NO.	QUANTITY	DESCRIPTION
1	647-2505	1	COTTER PIN 1/4" X 5" ZINC
2	401-CPSMountplate	1	COMPACT PS UNIVERSAL MOUNT PLATE
4	900-8884	1	2" SLOTTED NUT
5	401-CPSMASTWIP	1	COMPACT PS MAST WELDMENT
6	711-3402	1	HYDRAULIC PUMP
7	401-0179	1	OMNI GEARBOX MDH-40 W/SAE B INPUT
8	401-CPSDeckwip	1	COMPACT PS DECK WELDMENT
10	116-1656	1	NUT, 1/2 NC NYLOCK (628-8)
17	105-4435	2	PS GUARD STEP-DOWN BUSHING
18	401-PSLongpin	1	PS LONG PIN
19	154-5	1	HITCH PIN CLIP 5/32x2-15/16 (100)
20	412-0058	4	NUT 1/2-13 NC GR 5 ZP (620-8)
21	412-0042-02	4	BOLT, 1/2 x 1-1/2 NC GR5 ZINC PLTD FLAT
22	412-0072-01	4	WASHER, 1/2"
23	104-0044	1	REAR RUBBER PATH SLAYER
24	412-0024	4	BOLT 5/8-18 2-1/2 GR 8 HHCS NF
25	412-0076-01	4	F/W, 5/8" GR8 Z/P F436 SAE H.S.
26	412-3500	4	TOP LOCKNUT 5/8-18 GRC
27	412-2006	2	NUT, TOPLOCK, 9/16 GRC
28	412-2007	2	BOLT, 9/16X 2-1/2, NC GR8 ZP
29	405-3016	2	GALVANIZED NUT, 5/8"
30	651-5812	1	TURNBUCKLE, 5/8 X 12 JAW TO JAW HEX
31	412-0059-01	1	NUT, 5/8-11 LH THREAD, GALVANIZED PS
32	104-0045	2	EXTENSION SPRING 3/4
33	105-4434	4	PS RUBBER GUARD BUSHING

COMPACT PATH SLAYER PARTS LIST

COMPACT PATH SLAYER BLADE CARRIER ASSEMBLY



NO.	PART NUMBER	QTY.	DESCRIPTION
01	401-CPSBB	1	BLADE BAR ASSEMBLY
02	401-0153A	2	BLADE
03.....	412-0057-03	2	BLADE BOLT
04.....	125-925.....	2	NUT
05	900-8771	2	FLATWASHERS
06.....	610-1270	2	1/4" WEAR PAD
07.....	610-1270-1	1	1/2" WEAR PAD
08.....	647-100	1	5/32" x 2" COTTER PIN
09.....	501-0266	1	Hex Nut 1" Castle
XX	412-8043-03	2	BLADE BOLT KIT (3, 4, 5, 6)

MODERN AG PRODUCTS, LTD. WARRANTY INFORMATION

A. Limited Warranties

Modern Ag warrants any new Modern Ag implement purchased from an authorized Modern Ag dealer to the purchaser for a period not to exceed one (1) year from original purchase date, to be free from defects in material and workmanship. Warranty services must be performed by a dealer or service center authorized by Modern Ag using only new or remanufactured parts or components furnished by Modern Ag. Modern Ag reserves the right to inspect all parts which are claimed to have been defective in material and workmanship. Modern Ag makes no warranty as to the design, capability, capacity or suitability for the use of the implement.

B. Limited Warranty Service

To receive warranty service, the Purchaser must return the Registration & Warranty Card along with Checklist to Modern Ag within 30 days of original purchase. Purchaser must report claim, in writing, to the authorized Modern Ag dealer from whom the Purchaser purchased the implement originally or an approved Modern Ag dealer within 30 days after the Purchaser discovers the circumstance for the basis of the claim. The purchaser will be responsible for any service call and/or the return to and from the dealer's or service center's place of business.

C. Not Covered by Warranty

The limited warranty does not cover any goods or part(s) that have been subjected to improper or abnormal use such as negligence, abuse, alteration, modification, accident, lack of or improper maintenance, use of wrong oil or lubricants. This limited warranty does not apply to expendable items such as blades, shields, guards, pneumatic tires or any normal maintenance parts or service. Also not covered is wear items such as teeth, chains, sprockets, belts, springs, gearbox lubricant, hydraulic fluid or any other items that in the company's sole judgment is a wear item.

D. Disclaimer of Implied Warranties & Consequential Damages

Except as provided herein, no employee, agent, Dealer, or other person is authorized to give any warranties of any nature on behalf of Modern Ag. The purchaser's only remedies in connection with the breach or performance of any warranty on the Modern Ag implements are those set forth on this page. In no event will Modern Ag, the dealer or any company affiliated with Modern Ag be liable for incidental or consequential damages. Such incidental and consequential damages shall include but not be limited to transportation charges other than normal freight charges, cost of installation other than cost approved by Modern Ag, duty, taxes, charges for normal service or loss of crops or any other loss of income, rental of substitute equipment, expenses due to loss, damage, detention or delay in the delivery of equipment or parts resulting from acts beyond Modern Ag's control. Except as provided herein, no employee, agent, Dealer, or other person is authorized to give any warranties of any nature on behalf of Modern Ag.

**This form is required to be mailed with the completed Warranty Registration to
PO Box 790, Beaumont, TX 77704**

MODERN AG PRODUCTS, LTD. WARRANTY INFORMATION

DEALER: I hereby certify that:

1. The machine has been correctly assembled in accordance with manufacturer's instructions.
2. All bolts have been checked and tightened.
3. All other pre-delivery checks have been completed as per operator's manual.
4. Purchaser was given operators manual and instructed in safe and correct usage of machine and on limitation of warranty.
5. Machine was tested and operates correctly.

PURCHASER: I hereby certify that:

1. The machine is correctly assembled.
2. Receipt of the operator's manual which I have read and clearly understood.
3. I have a clear understanding of the warranty limitations.
4. I have a clear understanding on the correct and safe operation of the machine.
5. That the machine needs regular maintenance as per instructions in operator's manual.
6. I have a clear understanding on the capacity of this machine and am aware of its limitations.

MODEL _____ SERIAL # _____

DEALER _____ DATE DELIVERED _____

DEALER'S STAMP

PURCHASERS' ADDRESS:

To register your implement and be eligible for warranty service, mail the completed Warranty Registration & Checklist to

PO Box 790, Beaumont, TX 77704

If you have any questions, please contact wholegoods.warranty@modernusa.com

2402v1

MODERN AG PRODUCTS, LTD. PATHSLAYER CHECKLIST

Dealer:

Tractor Model: _____ Tractor HP: _____ Tractor GPM Rating: _____

Tractor Hydraulic Reservoir Capacity: _____ Does the tractor have a 3rd Function? _____

Tractor has an HST transmission? _____ HR30 required? _____

Rear remote has a detent valve, not a float valve? _____ Intended Hours of Operation? _____

_____ I have given the Purchaser an operating manual and reviewed operating procedures with them.

_____ To the best of my knowledge, the Purchaser's tractor (as listed above) is suitable for operating the attachment.

Purchaser:

Tractor Model: _____ Tractor HP: _____ Tractor GPM Rating: _____

Tractor Hydraulic Reservoir Capacity: _____ I [do / do not] require an HR30 for proper operation.

_____ I understand that I need to have a counterweight implement or HR30 on the back of the tractor during operation.

_____ I have been given an operating manual from the Dealer and understand proper operating procedures.

_____ I understand that the Dealer has deemed only the tractor listed above as suitable for operation, and if I operate the attachment with a different tractor, I am doing so at my own risk and liability.

Dealer and Purchaser: Please initial each line ensuring following information has been reviewed:

_____ Minimum HP Ratings: 50 HP for Pathslayer, 25 HP for Compact Pathslayer

_____ Minimum 8-gallon hydraulic reservoir required, otherwise an HR30 is required.

_____ The HR30 is recommend for best operation but will function with rear remote or 3rd function if equipped properly (see dealer for requirements)

_____ If operating with a third function, intermediate/occasional use is best to avoid hydraulic oil overheating.

_____ This unit requires half inch hoses.

_____ The Purchaser has been given and has read/understands operating procedures or has watched a video detailing operating procedures.

I certify that all the above information is correct. I understand that failure to comply with the above standards waives any liability of Modern Ag. I understand that failure to report accurate or new information also waives any liability of Modern Ag.

Dealer Signature: _____

Purchaser signature: _____

**This form is required to be mailed with the completed Warranty Registration to
PO Box 790, Beaumont, TX 77704**

If you have any questions, please contact wholegoods.warranty@modernusa.com